

Recombinant Human CXCL6 protein (rFc Tag)

Catalog Number: Eg3386

Basic Information

Species:
Human

Purity:
>90 %, SDS-PAGE

Tag:
rFc Tag

Technical Specifications

Purity:

>90 %, SDS-PAGE

Endotoxin Level:

<0.1 EU/ µg protein, LAL method

Source:

HEK293-derived Human CXCL6 protein Gly38-Asn114 (Accession# P80162) with a rabbit IgG Fc tag at the N-terminus.

GeneID:

6372

Accession:

P80162

Predicted Molecular Mass:

35.5 kDa

SDS-PAGE:

35-45 kDa, reducing (R) conditions

Formulation:

Lyophilized from 0.22 µm filtered solution in PBS, pH 7.4. Normally 5% trehalose and 5% mannitol are added as protectants before lyophilization.

Biological Activity

Not tested

Storage and Shipping

Storage:

It is recommended that the protein be aliquoted for optimal storage. Avoid repeated freeze-thaw cycles.

- Until expiry date, -20°C to -80°C as lyophilized proteins.
- 3 months, -20°C to -80°C under sterile conditions after reconstitution.

Shipping:

The product is shipped at ambient temperature. Upon receipt, store it immediately at the recommended temperature.

Reconstitution

Briefly centrifuge the tube before opening. Reconstitute at 0.1-0.5 mg/mL in sterile water.

Background

Chemokine (C-X-C motif) ligand 6 (CXCL6) is a small cytokine belonging to the CXC chemokine family that is also known as granulocyte chemotactic protein 2 (GCP-2). As its former name suggests, CXCL6 is a chemoattractant for neutrophilic granulocytes. It elicits its chemotactic effects by interacting with the chemokine receptors CXCR1 and CXCR2. The gene for CXCL6 is located on human chromosome 4 in a cluster with other CXC chemokine genes.

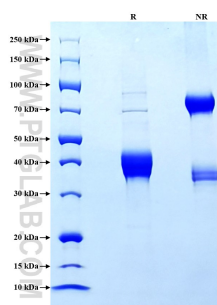
References

1. Proost P, Wuyts A, Conings R, et al. (1993) Biochemistry.32(38):10170-10177.
2. Wuyts A, Van Osselaer N, Haelens A, et al. (1997) Biochemistry.36(9):2716-2723.
3. Modi WS, Chen ZQ. (1998) Genomics.47(1):136-139.
4. O'Donovan N, Galvin M, Morgan JG. (1999) Cytogenet Cell Genet.84(1-2):39-42.

Synonyms

CXCL6, GCP-2, C X C motif chemokine 6, CXCL 6, CXCL-6

Selected Validation Data



Purity of Recombinant Human CXCL6 was determined by SDS-PAGE. The protein was resolved in an SDS-PAGE in reducing (R) and non-reducing (NR) conditions and stained using Coomassie blue.

For technical support and original validation data for this product please contact

T: 027-87531629

E: Proteintech-CN@ptglab.com

W: ptgcn.com

This product is exclusively available under Proteintech Group brand and is not available to purchase from any other manufacturer.