

For Research Use Only

Recombinant Human hCG Beta protein (rFc Tag)



Catalog Number: Eg3378

Basic Information	Species: Human	Purity: >90 %, SDS-PAGE	Tag: rFc Tag
-------------------	-------------------	----------------------------	-----------------

Technical Specifications

Purity:
>90 %, SDS-PAGE

Endotoxin Level:
<0.1 EU/ μ g protein, LAL method

Source:
HEK293-derived Human hCG Beta protein Ser21-Gln165 (Accession# PODN86-1) with a rabbit IgG Fc tag at the C-terminus.

GeneID:
1082

Accession:
PODN86-1

Predicted Molecular Mass:
41.8 kDa

SDS-PAGE:
50-65 kDa, reducing (R) conditions

Formulation:
Lyophilized from 0.22 μ m filtered solution in PBS, pH 7.4. Normally 5% trehalose and 5% mannitol are added as protectants before lyophilization.

Biological Activity

Not tested

Storage and Shipping

Storage:
It is recommended that the protein be aliquoted for optimal storage. Avoid repeated freeze-thaw cycles.

- Until expiry date, -20°C to -80°C as lyophilized proteins.
- 3 months, -20°C to -80°C under sterile conditions after reconstitution.

Shipping:
The product is shipped at ambient temperature. Upon receipt, store it immediately at the recommended temperature.

Reconstitution

Briefly centrifuge the tube before opening. Reconstitute at 0.1-0.5 mg/mL in sterile water.

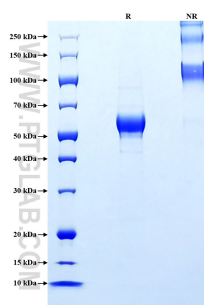
Background

The glycoprotein hormone human chorionic gonadotropin (hCG) is known for its pregnancy-supporting role. It is produced mainly by trophoblast cells and also produced by the secretory endometrium at the time of implantation. The hCG protein complex is composed of two noncovalently linked subunits, alpha (CGA) and beta (CGB). Both subunits are highly glycosylated. Its alpha subunit is common to luteinizing hormone (LH), follicle-stimulating hormone (FSH) and thyrotropin (TSH), whereas the respective beta-subunits confer the biological specificities.

References

Synonyms

Selected Validation Data



Purity of Recombinant Human hCG Beta was determined by SDS-PAGE. The protein was resolved in an SDS-PAGE in reducing (R) and non-reducing (NR) conditions and stained using Coomassie blue.

For technical support and original validation data for this product please contact

T: 027-87531629

E: Proteintech-CN@ptglab.com

W: ptgcn.com

This product is exclusively available under Proteintech Group brand and is not available to purchase from any other manufacturer.