

For Research Use Only

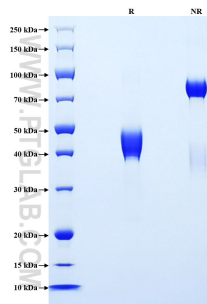
Recombinant Human CCL7/MCP-3 protein (rFc Tag)



Catalog Number: Eg3337

Basic Information	Species: Human	Purity: >90 %, SDS-PAGE	Tag: rFc Tag
Technical Specifications	<p>Purity: >90 %, SDS-PAGE</p> <p>Endotoxin Level: <0.1 EU/ µg protein, LAL method</p> <p>Source: HEK293-derived Human CCL7 protein Gln24-Leu99 (Accession# P80098) with a rabbit IgG Fc tag at the C-terminus.</p> <p>GeneID: 6354</p> <p>Accession: P80098</p> <p>Predicted Molecular Mass: 35.2 kDa</p> <p>SDS-PAGE: 38-50 kDa, reducing (R) conditions</p> <p>Formulation: Lyophilized from 0.22 µm filtered solution in PBS, pH 7.4. Normally 5% trehalose and 5% mannitol are added as protectants before lyophilization.</p>		
Biological Activity	Not tested		
Storage and Shipping	<p>Storage: It is recommended that the protein be aliquoted for optimal storage. Avoid repeated freeze-thaw cycles.</p> <ul style="list-style-type: none">• Until expiry date, -20°C to -80°C as lyophilized proteins.• 3 months, -20°C to -80°C under sterile conditions after reconstitution. <p>Shipping: The product is shipped at ambient temperature. Upon receipt, store it immediately at the recommended temperature.</p>		
Reconstitution	Briefly centrifuge the tube before opening. Reconstitute at 0.1-0.5 mg/mL in sterile water.		
Background	<p>The chemokine CCL7 (MCP3) is a chemotactic factor and potent attractant of monocytes firstly characterized from the culture supernatants of MG-63 osteosarcoma cells. CCL7 is known to promote the recruitment of many innate immune cell types including monocytes and neutrophils to sites of bacterial and viral infection and eosinophils and basophils to sites of allergic inflammation. CCL7 is expressed at low levels in endothelial cells, fibroblasts and mononuclear cells and upregulated by various stimuli including viruses, type I or type II interferons (IFNs). CCL7 (MCP-3) mediates effects on a host of innate and adaptive immune cell types through binding to numerous receptors including CCR1, CCR2, CCR3, CCR5, and CCR10. Various studies have shown that tumor cells and stromal cells also produce high levels of CCL7, while the specific response element and signaling pathways involved are not entirely clear.</p>		
References	<ol style="list-style-type: none">1. JVanDamme.etal.(1992) JExpMed.176(1):59-65.2. P Menten.etal. (1999) Eur JImmunol.29(2):678-85.3. JasonWGriffith. et al. (2014) Annu Rev Immunol. 32:659-702.4. ABen-Baruch. etal. (1995). J Biol Chem. 270(38):22123-8.5. Pui YLee. etal. (2009) Am JPathol.175(5):2023-33.		
Synonyms	CCL7, CCL7, MCP3, C C motif chemokine 7, CCL 7, CCL-7		

Selected Validation Data



Purity of Recombinant Human CCL7 was determined by SDS-PAGE. The protein was resolved in an SDS-PAGE in reducing (R) and non-reducing (NR) conditions and stained using Coomassie blue.

For technical support and original validation data for this product please contact

T: 027-87531629

E: Proteintech-CN@ptglab.com

W: ptgcn.com

This product is exclusively available under Proteintech Group brand and is not available to purchase from any other manufacturer.