

For Research Use Only

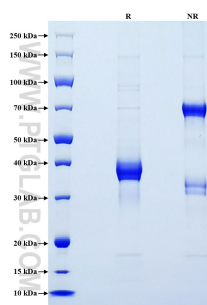
Recombinant Mouse CCL20/MIP-3 alpha protein (rFc Tag)



Catalog Number: Eg3311

Basic Information	Species: Mouse	Purity: >90 %, SDS-PAGE	Tag: rFc Tag
Technical Specifications	<p>Purity: >90 %, SDS-PAGE</p> <p>Endotoxin Level: <0.1 EU/ µg protein, LAL method</p> <p>Source: HEK293-derived Mouse CCL20 protein Ser28-Met96 (Accession# Q642U4) with a rabbit IgG Fc tag at the C-terminus.</p> <p>GeneID: 20297</p> <p>Accession: Q642U4</p> <p>Predicted Molecular Mass: 34.2 kDa</p> <p>SDS-PAGE: 35-40 kDa, reducing (R) conditions</p> <p>Formulation: Lyophilized from 0.22 µm filtered solution in PBS, pH 7.4. Normally 5% trehalose and 5% mannitol are added as protectants before lyophilization.</p>		
Biological Activity	Not tested		
Storage and Shipping	<p>Storage: It is recommended that the protein be aliquoted for optimal storage. Avoid repeated freeze-thaw cycles.</p> <ul style="list-style-type: none">• Until expiry date, -20°C to -80°C as lyophilized proteins.• 3 months, -20°C to -80°C under sterile conditions after reconstitution. <p>Shipping: The product is shipped at ambient temperature. Upon receipt, store it immediately at the recommended temperature.</p>		
Reconstitution	Briefly centrifuge the tube before opening. Reconstitute at 0.1-0.5 mg/mL in sterile water.		
Background	<p>CCL20, also known as MIP-3 alpha, is a chemokine expressed mainly in the lymphatic tissue, lung and liver produced by cells related with inflammation and autoimmune response such as endothelial cells, neutrophils, natural killer (NK), Th17 cells and B cells among others. CCL20 contributes to inflammatory cell recruitment. CCL20 selectively signals through its receptor CCR6. The ligand-receptor pair CCL20/CCR6 is responsible for the chemoattraction of immature dendritic cells, effector/memory T cells and B cells, and also serves a role in the skin and mucosal surfaces under homeostatic and inflammatory conditions, as well as in pathological processes, such as those associated with cancer and rheumatoid arthritis.</p>		
References	<ol style="list-style-type: none">1. Schutysen E.etal.(2003). Cytokine Growth Factor Rev. 14(5):409-26.2. Hromas R.etal.(1997). Blood. 89(9):3315-22.3. Shimizu Y.etal.(2001). Hepatology. 34(2):311-9.4. Lee AY.etal.(2013). Front Immunol. 4:194.		
Synonyms	Beta-chemokine exodus-1, CC chemokine LARC, CC chemokine ST38, C-C motif chemokine 20, CCL 20		

Selected Validation Data



Purity of Recombinant Mouse CCL20 was determined by SDS-PAGE. The protein was resolved in an SDS-PAGE in reducing (R) and non-reducing (NR) conditions and stained using Coomassie blue.

For technical support and original validation data for this product please contact

T: 027-87531629

E: Proteintech-CN@ptglab.com

W: ptgcn.com

This product is exclusively available under Proteintech Group brand and is not available to purchase from any other manufacturer.