

For Research Use Only

# Recombinant Human CCL3 protein (rFc Tag)



Catalog Number: Eg3309

## Basic Information

**Species:**  
Human

**Purity:**  
>90 %, SDS-PAGE

**Tag:**  
rFc Tag

## Technical Specifications

**Purity:**

>90 %, SDS-PAGE

**Endotoxin Level:**

<0.1 EU/  $\mu$ g protein, LAL method

**Source:**

CHO-derived Human CCL3 protein Ser24-Ala92 (Accession# P10147) with a rabbit IgG Fc tag at the C-terminus.

**GeneID:**

6348

**Accession:**

P10147

**Predicted Molecular Mass:**

33.7 kDa

**SDS-PAGE:**

35-39 kDa, reducing (R) conditions

**Formulation:**

Lyophilized from 0.22  $\mu$ m filtered solution in 30mM Tris, 500mM arginine, pH 8.0. Normally 5% trehalose and 5% mannitol are added as protectants before lyophilization.

## Biological Activity

Not tested

## Storage and Shipping

**Storage:**

It is recommended that the protein be aliquoted for optimal storage. Avoid repeated freeze-thaw cycles.

- Until expiry date, -20°C to -80°C as lyophilized proteins.
- 3 months, -20°C to -80°C under sterile conditions after reconstitution.

**Shipping:**

The product is shipped at ambient temperature. Upon receipt, store it immediately at the recommended temperature.

## Reconstitution

Briefly centrifuge the tube before opening. Reconstitute at 0.1-0.5 mg/mL in sterile water.

## Background

CCL3, also known as macrophage inflammatory protein-1 alpha (MIP-1  $\alpha$ ), belongs to the CC chemokine family and is a small-molecule cytokine secreted by activated immune cells such as T cells and macrophages. Its primary function is to bind to and activate the chemokine receptors CCR1 and CCR5 on cell surfaces, thereby recruiting and activating various immune cells including monocytes, macrophages, T cells, and dendritic cells. This plays a critical role in infection defense, inflammatory responses, and tumor immune surveillance. Research indicates that CCL3 is aberrantly expressed in conditions such as rheumatoid arthritis, HIV infection, and the microenvironment of various tumors, making it an important therapeutic target for inflammatory diseases and tumor immunotherapy. Receptor antagonists targeting its pathway, such as anti-CCR5 drugs, have already been applied in clinical practice.

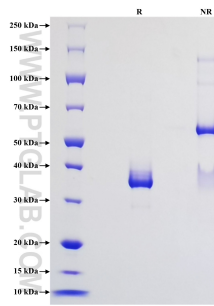
## References

1. Soares, Denis Melo et al. Brain research vol. 1269 (2009): 54-60. 2. Barcelos, Lucíola S et al. Microvascular research

## Synonyms

CCL3, MIP 1 alpha/CCL3, MIP-1 alpha, MIP-1 Alpha/CCL3, C C motif chemokine 3

## Selected Validation Data



Purity of Recombinant Human CCL3 was determined by SDS-PAGE. The protein was resolved in an SDS-PAGE in reducing (R) and non-reducing (NR) conditions and stained using Coomassie blue.

For technical support and original validation data for this product please contact

T: 027-87531629

E: [Proteintech-CN@ptglab.com](mailto:Proteintech-CN@ptglab.com)

W: [ptgcn.com](http://ptgcn.com)

This product is exclusively available under Proteintech Group brand and is not available to purchase from any other manufacturer.