

For Research Use Only

Recombinant Mouse CCL1 protein (rFc Tag)



Catalog Number: Eg3293

Basic Information

Species:
Mouse

Purity:
>90 %, SDS-PAGE

Tag:
rFc Tag

Technical Specifications

Purity:
>90 %, SDS-PAGE

Endotoxin Level:
<0.1 EU/ μ g protein, LAL method

Source:
HEK293-derived Mouse CCL1 protein Lys24-Cys92 (Accession# P10146-1) with a rabbit IgG Fc tag at the N-terminus.

GeneID:
20290

Accession:
P10146-1

Predicted Molecular Mass:
35.0 kDa

SDS-PAGE:
37-45 kDa, reducing (R) conditions

Formulation:
Lyophilized from 0.22 μ m filtered solution in PBS, pH 7.4. Normally 5% trehalose and 5% mannitol are added as protectants before lyophilization.

Biological Activity

Not tested

Storage and Shipping

Storage:
It is recommended that the protein be aliquoted for optimal storage. Avoid repeated freeze-thaw cycles.

- Until expiry date, -20°C to -80°C as lyophilized proteins.
- 3 months, -20°C to -80°C under sterile conditions after reconstitution.

Shipping:
The product is shipped at ambient temperature. Upon receipt, store it immediately at the recommended temperature.

Reconstitution

Briefly centrifuge the tube before opening. Reconstitute at 0.1-0.5 mg/mL in sterile water.

Background

CCL1, also known as I-309 in human or TCA-3 in mice, is a small glycoprotein belonging to the CC chemokine family. It is predominantly expressed by activated T cells, monocytes, and endothelial cells, and primarily acts as a chemoattractant for monocytes and T cells. CCL1 binds to the receptor CCR8, which is expressed on monocytes, neutrophils, and T cells, including within the thymus. This chemokine may perform dual functions: as an inflammatory chemokine during leukocyte migration into inflammatory sites and as a constitutive chemokine during T cell selection in the thymus. Furthermore, CCL1 has been associated with allergic inflammation and the recruitment of Th2 cells, suggesting a role in allergic diseases such as asthma.

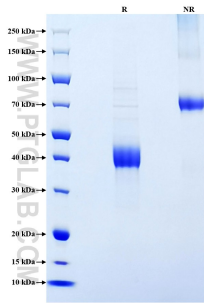
References

1. Miller MD, Krangel MS. (1992). Proc Natl Acad Sci U S A. 89 (7).
2. Kuehnemuth B, et al. (2018) BMC Cancer. 18 (1):1278.

Synonyms

C-C motif chemokine 1, Ccl1, P500, Scya1, SIS-epsilon

Selected Validation Data



Purity of Recombinant Mouse CCL1 was determined by SDS-PAGE. The protein was resolved in an SDS-PAGE in reducing (R) and non-reducing (NR) conditions and stained using Coomassie blue.

For technical support and original validation data for this product please contact

T: 027-87531629

E: Proteintech-CN@ptglab.com

W: ptgcn.com

This product is exclusively available under Proteintech Group brand and is not available to purchase from any other manufacturer.