

For Research Use Only

Recombinant Mouse TFPI protein (rFc Tag)



Catalog Number: Eg3128

Basic Information

Species:
Mouse

Purity:
>90 %, SDS-PAGE

Tag:
rFc Tag

Technical Specifications

Purity:
>90 %, SDS-PAGE

Endotoxin Level:
<0.1 EU/ μ g protein, LAL method

Source:
HEK293-derived Mouse TFPI protein Leu29-Lys289 (Accession# O54819-1) with a rabbit IgG Fc tag at the C-terminus.

GeneID:
21788

Accession:
O54819-1

Predicted Molecular Mass:
55.7 kDa

SDS-PAGE:
60-70 kDa, reducing (R) conditions

Formulation:
Lyophilized from 0.22 μ m filtered solution in PBS, pH 7.4. Normally 5% trehalose and 5% mannitol are added as protectants before lyophilization.

Biological Activity

Not tested

Storage and Shipping

Storage:

It is recommended that the protein be aliquoted for optimal storage. Avoid repeated freeze-thaw cycles.

- Until expiry date, -20°C to -80°C as lyophilized proteins.
- 3 months, -20°C to -80°C under sterile conditions after reconstitution.

Shipping:

The product is shipped at ambient temperature. Upon receipt, store it immediately at the recommended temperature.

Reconstitution

Briefly centrifuge the tube before opening. Reconstitute at 0.1-0.5 mg/mL in sterile water.

Background

Tissue Factor Pathway Inhibitor (TFPI), also known as TFPI1, EPI, LACI, or TFI, encodes a Kunitz-type serine protease inhibitor that plays a pivotal role in regulating the blood coagulation process. TFPI reduces the development of atherosclerosis by regulating tissue factor (TF) mediated coagulation pathway. Changes in the expression of tissue factor pathway inhibitor (TFPI), thrombomodulin, selectins, and adhesion molecules in pulmonary endothelial cells as well as complex regulation and interaction of vasoactive substances and growth factors released from endothelium may underlie the mechanisms of pulmonary endothelial dysfunction in COPD.

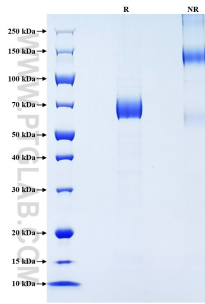
References

1. Yuan HQ. et al. (2019). Clin Chim Acta. 491:97-102.
2. Yang Q. (2008). Curr Drug Metab. 9(7):661-7.

Synonyms

EPI, Extrinsic pathway inhibitor, LACI, Lipoprotein-associated coagulation inhibitor, TFPI

Selected Validation Data



Purity of Recombinant Mouse TFPI was determined by SDS-PAGE. The protein was resolved in an SDS-PAGE in reducing (R) and non-reducing (NR) conditions and stained using Coomassie blue.

For technical support and original validation data for this product please contact

T: 027-87531629

E: Proteintech-CN@ptglab.com

W: ptgcn.com

This product is exclusively available under Proteintech Group brand and is not available to purchase from any other manufacturer.