

For Research Use Only

# Recombinant Mouse CGA protein (rFc Tag)



Catalog Number: Eg3094

## Basic Information

**Species:**  
Mouse

**Purity:**  
>90 %, SDS-PAGE

**Tag:**  
rFc Tag

## Technical Specifications

**Purity:**

>90 %, SDS-PAGE

**Endotoxin Level:**

<0.1 EU/  $\mu$ g protein, LAL method

**Source:**

HEK293-derived Mouse CGA protein Leu25-Tyr116 (Accession# P01216) with a rabbit IgG Fc tag at the C-terminus.

**GeneID:**

12640

**Accession:**

P01216

**Predicted Molecular Mass:**

36.2 kDa

**SDS-PAGE:**

40-50 kDa, reducing (R) conditions

**Formulation:**

Lyophilized from 0.22  $\mu$ m filtered solution in PBS, pH 7.4. Normally 5% trehalose and 5% mannitol are added as protectants before lyophilization.

## Biological Activity

Not tested

## Storage and Shipping

**Storage:**

It is recommended that the protein be aliquoted for optimal storage. Avoid repeated freeze-thaw cycles.

- Until expiry date, -20°C to -80°C as lyophilized proteins.
- 3 months, -20°C to -80°C under sterile conditions after reconstitution.

**Shipping:**

The product is shipped at ambient temperature. Upon receipt, store it immediately at the recommended temperature.

## Reconstitution

Briefly centrifuge the tube before opening. Reconstitute at 0.1-0.5 mg/mL in sterile water.

## Background

CGA (Chromogranin A), known as Chromogranin A, is an acidic, hydrophilic protein consisting of 439 amino acids with a molecular mass of approximately 48 kDa. It is a member of the neuropeptide family and is widely distributed in the neuroendocrine system. CGA has been an attractive therapeutic target and candidate biomarker for a variety of cardiovascular, neurological, and inflammatory diseases. CgA concentration is used as a diagnostic marker in hypertensive pheochromocytoma patients. (PMID: 36902417) Plasma CGA levels are diagnostic in prostate cancer and are particularly important in the monitoring and diagnosis of prostate-specific antigen-negative or progressive prostate cancer with distant metastases.

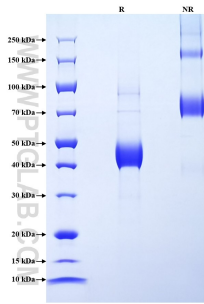
## References

1. Bralewska M, et al. Int J Mol Sci. 2023;24(5):4986.
2. Ploussard G, et al. World J Urol. 2023;41(2):361-369.
3. Laguerre F, et al. IUBMB Life. 2020;72(4):524-532.
4. Iyer DR, et al. Cell Mol Life Sci. 2023;80(9):271.

## Synonyms

Anterior pituitary glycoprotein hormones common subunit alpha, Cga, Follicle-stimulating hormone alpha chain, Follitropin alpha chain, FSH-alpha

## Selected Validation Data



Purity of Recombinant Mouse Cga was determined by SDS-PAGE. The protein was resolved in an SDS-PAGE in reducing (R) and non-reducing (NR) conditions and stained using Coomassie blue.

For technical support and original validation data for this product please contact

T: 027-87531629

E: [Proteintech-CN@ptglab.com](mailto:Proteintech-CN@ptglab.com)

W: [ptgcn.com](http://ptgcn.com)

This product is exclusively available under Proteintech Group brand and is not available to purchase from any other manufacturer.