

For Research Use Only

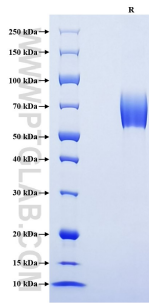
# Recombinant Mouse CD25/IL2RA protein (rFc Tag)



Catalog Number: Eg3087

Basic Information	Species: Mouse	Purity: >90 %, SDS-PAGE	Tag: rFc Tag
Technical Specifications	<p><b>Purity:</b> &gt;90 %, SDS-PAGE</p> <p><b>Endotoxin Level:</b> &lt;0.1 EU/ <math>\mu</math>g protein, LAL method</p> <p><b>Source:</b> HEK293-derived Mouse CD25 protein Glu22-Lys236 (Accession# P01590) with a rabbit IgG Fc tag at the C-terminus.</p> <p><b>GeneID:</b> 16184</p> <p><b>Accession:</b> P01590</p> <p><b>Predicted Molecular Mass:</b> 50.7 kDa</p> <p><b>SDS-PAGE:</b> 55-85 kDa, reducing (R) conditions</p> <p><b>Formulation:</b> Lyophilized from 0.22 <math>\mu</math>m filtered solution in PBS, pH 7.4. Normally 5% trehalose and 5% mannitol are added as protectants before lyophilization.</p>		
Biological Activity	Not tested		
Storage and Shipping	<p><b>Storage:</b> It is recommended that the protein be aliquoted for optimal storage. Avoid repeated freeze-thaw cycles.</p> <ul style="list-style-type: none"><li>• Until expiry date, -20°C to -80°C as lyophilized proteins.</li><li>• 3 months, -20°C to -80°C under sterile conditions after reconstitution.</li></ul> <p><b>Shipping:</b> The product is shipped at ambient temperature. Upon receipt, store it immediately at the recommended temperature.</p>		
Reconstitution	Briefly centrifuge the tube before opening. Reconstitute at 0.1-0.5 mg/mL in sterile water.		
Background	<p>CD25, the <math>\alpha</math> chain of interleukin-2 receptor (IL2RA), is predominantly expressed on the surface of immune-related cells, including activated T cells, B cells, and NK cells. For cancers, CD25 is expressed at high levels in many types of hematological malignancies, but at low levels in most solid tumors. CD25 is also highly expressed in activated circulating immune cells and regulatory T cells (Tregs). CD25 is one of the non-MHC II genes associated with some autoimmune diseases such as systemic sclerosis and systemic lupus erythematosus. CD25 as a potential target for the depletion of Tregs is critical in developing new immunotherapeutic strategies.</p>		
References	<ol style="list-style-type: none"><li>1.Hinks A. et al. (2009) Arthritis Rheum. 60(1):251-257.</li><li>2.Alsahebhosoul F. et al. (2017) Mult Scler Relat Disord. 18:117-118.</li><li>3.Peng Y. et al. (2023) Int J Cancer. 152(7):1290-1303.</li><li>4.Luo H. et al. (2023) Front Immunol. 14:1247710.</li><li>5.Spolski R. et al. (2023) Sci Immunol. 8(89):eadi8217.</li></ol>		
Synonyms	CD25, IL-2 receptor subunit alpha, IL2r, IL-2R subunit alpha, IL2ra		

## Selected Validation Data



Purity of Recombinant Mouse CD25 was determined by SDS-PAGE. The protein was resolved in an SDS-PAGE in reducing (R) conditions and stained using Coomassie blue.

For technical support and original validation data for this product please contact

T: 027-87531629

E: [Proteintech-CN@ptglab.com](mailto:Proteintech-CN@ptglab.com)

W: [ptgcn.com](http://ptgcn.com)

This product is exclusively available under Proteintech Group brand and is not available to purchase from any other manufacturer.