

For Research Use Only

# Recombinant Human Complement Factor I protein (rFc Tag)



Catalog Number: Eg3066

## Basic Information

**Species:**  
Human

**Purity:**  
>90 %, SDS-PAGE

**Tag:**  
rFc Tag

## Technical Specifications

**Purity:**

>90 %, SDS-PAGE

**Endotoxin Level:**

<0.1 EU/  $\mu$ g protein, LAL method

**Source:**

HEK293-derived Human Complement Factor I protein Lys19-Val583 (Accession# P05156) with a rabbit IgG Fc tag at the C-terminus.

**GeneID:**

3426

**Accession:**

P05156

**Predicted Molecular Mass:**

89.1 kDa

**SDS-PAGE:**

95-120 kDa, reducing (R) conditions

**Formulation:**

Lyophilized from 0.22  $\mu$ m filtered solution in 30 mM Tris, 0.5 M Arg, pH 8.0. Normally 5% trehalose and 5% mannitol are added as protectants before lyophilization.

## Biological Activity

Not tested

## Storage and Shipping

**Storage:**

It is recommended that the protein be aliquoted for optimal storage. Avoid repeated freeze-thaw cycles.

- Until expiry date, -20°C to -80°C as lyophilized proteins.
- 3 months, -20°C to -80°C under sterile conditions after reconstitution.

**Shipping:**

The product is shipped at ambient temperature. Upon receipt, store it immediately at the recommended temperature.

## Reconstitution

Briefly centrifuge the tube before opening. Reconstitute at 0.1-0.5 mg/mL in sterile water.

## Background

Complement Factor I (CFI) protein is a key plasma serine protease, which is mainly synthesized in the liver, with a molecular weight of about 75-80 kDa, and circulates in the blood in the form of heterodimers of heavy chain (51 kDa)- light chain (37 kDa) disulfide bonds.

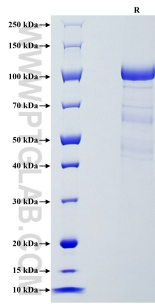
## References

1. Lachmann, Peter J. Immunobiology vol. 224,4 (2019): 511-517.
2. Zhang, Yuzhou et al. Frontiers in immunology vol. 13 866330. 10 May. 2022

## Synonyms

C3B/C4B inactivator, CFI, Complement factor I heavy chain, Complement factor I light chain, EC:3.4.21.45

## Selected Validation Data



Purity of Recombinant Human Complement Factor I was determined by SDS-PAGE. The protein was resolved in an SDS-PAGE in reducing (R) conditions and stained using Coomassie blue.

For technical support and original validation data for this product please contact

T: 027-87531629

E: [Proteintech-CN@ptglab.com](mailto:Proteintech-CN@ptglab.com)

W: [ptgcn.com](http://ptgcn.com)

This product is exclusively available under Proteintech Group brand and is not available to purchase from any other manufacturer.