

For Research Use Only

# Recombinant Mouse L1cam protein (rFc Tag)



Catalog Number: Eg3022

## Basic Information

**Species:**  
Mouse

**Purity:**  
>90 %, SDS-PAGE

**Tag:**  
rFc Tag

## Technical Specifications

**Purity:**

>90 %, SDS-PAGE

**Endotoxin Level:**

<0.1 EU/  $\mu$ g protein, LAL method

**Source:**

HEK293-derived Mouse L1cam protein Ile20-Glu1123 (Accession# P11627) with a rabbit IgG Fc tag at the C-terminus.

**GeneID:**

16728

**Accession:**

P11627

**Predicted Molecular Mass:**

150.1 kDa

**SDS-PAGE:**

140-250 kDa, reducing (R) conditions

**Formulation:**

Lyophilized from 0.22  $\mu$ m filtered solution in PBS, pH 7.4. Normally 5% trehalose and 5% mannitol are added as protectants before lyophilization.

## Biological Activity

Not tested

## Storage and Shipping

**Storage:**

It is recommended that the protein be aliquoted for optimal storage. Avoid repeated freeze-thaw cycles.

- Until expiry date, -20°C to -80°C as lyophilized proteins.
- 3 months, -20°C to -80°C under sterile conditions after reconstitution.

**Shipping:**

The product is shipped at ambient temperature. Upon receipt, store it immediately at the recommended temperature.

## Reconstitution

Briefly centrifuge the tube before opening. Reconstitute at 0.1-0.5 mg/mL in sterile water.

## Background

L1cam (the L1 cell adhesion molecule), is the prototype member of the L1-family of closely related neural adhesion molecules. L1cam is a 200–220 kDa transmembrane glycoprotein of the immunoglobulin (Ig) superfamily composed of six Ig-like domains and five fibronectin type III repeats followed by a transmembrane region and a highly conserved cytoplasmic tail. L1cam plays an essential role in the development of the nervous system but it is also highly relevant for the progression of human tumors. L1cam is not expressed in most normal tissues during homeostasis, including in rapidly proliferating tissues such as the intestinal epithelium.

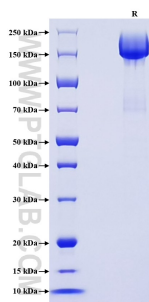
## References

1. Doberstein K, et al. (2015). Mar 1;136(5):E326-39.
2. Kiefel H, et al. (2012). Cell Adh Migr. Jul-Aug;6(4):374-384.
3. Ganesh K, et al. (2020). Nat Cancer. 2020 Jan;1(1):28-45.

## Synonyms

L1cam, N-CAM-L1, CAML1, CD171, N CAM L1

## Selected Validation Data



Purity of Recombinant Mouse L1cam was determined by SDS-PAGE. The protein was resolved in an SDS-PAGE in reducing (R) conditions and stained using Coomassie blue.

For technical support and original validation data for this product please contact

T: 027-87531629

E: [Proteintech-CN@ptglab.com](mailto:Proteintech-CN@ptglab.com)

W: [ptgcn.com](http://ptgcn.com)

This product is exclusively available under Proteintech Group brand and is not available to purchase from any other manufacturer.