

For Research Use Only

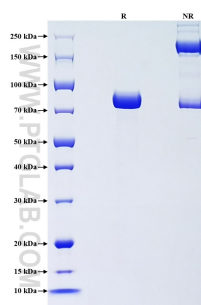
Recombinant Mouse Calreticulin protein (rFc Tag)



Catalog Number: Eg3005

| Basic Information | Species: Mouse | Purity: >90 %, SDS-PAGE | Tag: rFc Tag |
|--------------------------|---|----------------------------|-----------------|
| Technical Specifications | <p>Purity: >90 %, SDS-PAGE</p> <p>Endotoxin Level: <0.1 EU/ µg protein, LAL method</p> <p>Source: HEK293-derived Mouse Calreticulin protein Asp18-Leu416(Accession# P14211) with a rabbit IgG Fc tag at the C-terminus.</p> <p>GeneID: 12317</p> <p>Accession: P14211</p> <p>Predicted Molecular Mass: 72.4 kDa</p> <p>SDS-PAGE: 70-90 kDa, reducing (R) conditions</p> <p>Formulation: Lyophilized from 0.22 µm filtered solution in PBS, pH 7.4. Normally 5% trehalose and 5% mannitol are added as protectants before lyophilization.</p> | | |
| Biological Activity | Not tested | | |
| Storage and Shipping | <p>Storage: It is recommended that the protein be aliquoted for optimal storage. Avoid repeated freeze-thaw cycles.</p> <ul style="list-style-type: none">• Until expiry date, -20°C to -80°C as lyophilized proteins.• 3 months, -20°C to -80°C under sterile conditions after reconstitution. <p>Shipping: The product is shipped at ambient temperature. Upon receipt, store it immediately at the recommended temperature.</p> | | |
| Reconstitution | Briefly centrifuge the tube before opening. Reconstitute at 0.1-0.5 mg/mL in sterile water. | | |
| Background | <p>Calreticulin (CRT) is a multifunctional protein with diverse roles in cellular physiology and pathology. It is primarily localized to the endoplasmic reticulum (ER), where it plays a crucial role in protein folding, calcium homeostasis, and the unfolded protein response. CRT also has functions outside the ER, including cell surface expression and extracellular matrix interactions, which are implicated in adhesion, migration, phagocytosis, and immunoregulation. CRT's dysfunction has been linked to various diseases, particularly cancer. It is considered a potential diagnostic marker and therapeutic target for cancer due to its role in cellular proliferation, differentiation, and apoptosis.</p> | | |
| References | <ol style="list-style-type: none">1.Nauseef WM. et al. (1995). J Biol Chem. 270(9):4741-4747.2.Sun J. et al. (2017). Pharmazie. 72(9):503-510.3.Gold LI. et al. (2010). FASEB J. 24(3):665-683. | | |
| Synonyms | Calr, Calregulin, Calreticulin, CRP55, Endoplasmic reticulum resident protein 60 | | |

Selected Validation Data



Purity of Recombinant Mouse Calreticulin was determined by SDS-PAGE. The protein was resolved in an SDS-PAGE in reducing (R) and non-reducing (NR) conditions and stained using Coomassie blue.

For technical support and original validation data for this product please contact

T: 027-87531629

E: Proteintech-CN@ptglab.com

W: ptgcn.com

This product is exclusively available under Proteintech Group brand and is not available to purchase from any other manufacturer.