

For Research Use Only

Recombinant human CPE protein (rFc Tag)



Catalog Number: Eg2989

Basic Information

Species:
Human

Purity:
>85 %, SDS-PAGE

Tag:
C-rFc

Technical Specifications

Purity:

>85 %, SDS-PAGE

Endotoxin Level:

<0.1 EU/ µg protein, LAL method

Source:

HEK293-derived Human CPE protein Glu26-Ser453 (Accession# P16870-1) with a rabbit IgG Fc tag at the C-terminus

GeneID:

1363

Accession:

P16870-1

Predicted Molecular Mass:

73.9 kDa

SDS-PAGE:

68-80 kDa, reducing (R) condition

Formulation:

Lyophilized from 0.22 µm filtered solution in PBS, pH 7.4. Normally 5% trehalose and 5% mannitol are added as protectants before lyophilization.

Biological Activity

Not tested

Storage and Shipping

Storage:

It is recommended that the protein be aliquoted for optimal storage. Avoid repeated freeze-thaw cycles.

- Until expiry date, -20°C to -80°C as lyophilized proteins.
- 3 months, -20°C to -80°C under sterile conditions after reconstitution.

Shipping:

The product is shipped at ambient temperature. Upon receipt, store it immediately at the recommended temperature.

Reconstitution

Briefly centrifuge the tube before opening. Reconstitute at 0.1-0.5 mg/mL in sterile water.

Background

CPE is a multifunctional protein harboring both enzymatic and nonenzymatic functions, largely expressed in endocrine cells and peptidergic neurons in the nervous system. Full-length CPE (F-CPE) protein is an inhibitor of Wnt/β-catenin signaling, which disrupts disheveled-induced signalosomes that are important for transducing the Wnt signal and reduces β-catenin protein levels and activity (PMID: 22824791). Defects in the gene encoding carboxypeptidase E (CPE) in either mouse or human lead to multiple endocrine disorders, including obesity and diabetes (PMID: 16219026).

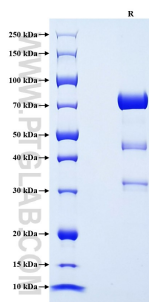
References

1. Skalka N. et al. (2013). Oncogene. 32(23):2836-47.
2. Zhu X. et al. (2005). J Neurochem. 95(5):1351-62.

Synonyms

Carboxypeptidase E, Carboxypeptidase H, CPE, CPH, EC:3.4.17.10

Selected Validation Data



Purity of Recombinant Human CPE was determined by SDS-PAGE. The protein was resolved in an SDS-PAGE in reducing (R) condition and stained using Coomassie blue.

For technical support and original validation data for this product please contact

T: 027-87531629

E: Proteintech-CN@ptglab.com

W: ptgcn.com

This product is exclusively available under Proteintech Group brand and is not available to purchase from any other manufacturer.