

For Research Use Only

Recombinant Human SDC2 protein (rFc Tag)



Catalog Number: Eg2947

Basic Information

Species:
Human

Purity:
>90 %, SDS-PAGE

Tag:
rFc Tag

Technical Specifications

Purity:

>90 %, SDS-PAGE

Endotoxin Level:

<0.1 EU/ μ g protein, LAL method

Source:

HEK293-derived Human SDC2 protein Glu19-Glu144 (Accession# P34741) with a rabbit IgG Fc tag at the C-terminus.

GeneID:

6383

Accession:

P34741

Predicted Molecular Mass:

40.0 kDa

SDS-PAGE:

45-65 kDa, reducing (R) conditions

Formulation:

Lyophilized from 0.22 μ m filtered solution in PBS, pH 7.4. Normally 5% trehalose and 5% mannitol are added as protectants before lyophilization.

Biological Activity

Not tested

Storage and Shipping

Storage:

It is recommended that the protein be aliquoted for optimal storage. Avoid repeated freeze-thaw cycles.

- Until expiry date, -20°C to -80°C as lyophilized proteins.
- 3 months, -20°C to -80°C under sterile conditions after reconstitution.

Shipping:

The product is shipped at ambient temperature. Upon receipt, store it immediately at the recommended temperature.

Reconstitution

Briefly centrifuge the tube before opening. Reconstitute at 0.1-0.5 mg/mL in sterile water.

Background

SDC2, containing cell surface heparan sulphate proteoglycan, functions as an integral membrane protein and participates in cell proliferation, migration, cell adhesion, and signal transduction. It has been reported that the expression level of SDC2 will be up-regulated under hypoxia conditions which can induce increased release of cytokines and chemokines. Besides, methylated SDC2 can be used as a potential biomarker for early diagnosis of colon cancer.

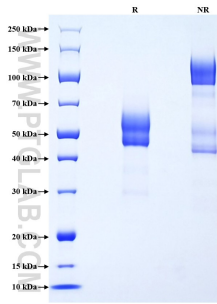
References

1. C Kaur. et al. (2009). *Glia*. 57(3):336-349.
2. Maria Mytilinaiou. et al.(2013). *IUBMB Life*. 65(2):134-143.
3. Stella Nikolaou. et al. (2018). *Tech Coloproctol*. 22(7):481-498.
4. Béla Molnár. et al. (2018). *BMC Cancer*. 18(1):695.

Synonyms

SDC2, CD362, HSPG, SYND2, syndecan 2

Selected Validation Data



Purity of Recombinant Human SDC2 was determined by SDS-PAGE. The protein was resolved in an SDS-PAGE in reducing (R) and non-reducing (NR) conditions and stained using Coomassie blue.

For technical support and original validation data for this product please contact

T: 027-87531629

E: Proteintech-CN@ptglab.com

W: ptgcn.com

This product is exclusively available under Proteintech Group brand and is not available to purchase from any other manufacturer.