

For Research Use Only

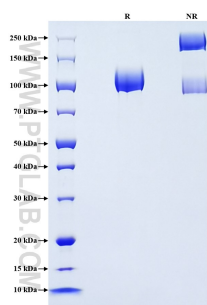
# Recombinant Human CD146/MCAM protein (rFc Tag)



Catalog Number: Eg2938

Basic Information	Species: Human	Purity: >90 %, SDS-PAGE	Tag: rFc Tag
Technical Specifications	<p><b>Purity:</b> &gt;90 %, SDS-PAGE</p> <p><b>Endotoxin Level:</b> &lt;0.1 EU/ µg protein, LAL method</p> <p><b>Source:</b> HEK293-derived Human CD146 protein Val24-Gly559 (Accession# P43121-1) with a rabbit IgG Fc tag at the C-terminus.</p> <p><b>GeneID:</b> 4162</p> <p><b>Accession:</b> P43121-1</p> <p><b>Predicted Molecular Mass:</b> 85.8 kDa</p> <p><b>SDS-PAGE:</b> 100-120 kDa, reducing (R) conditions</p> <p><b>Formulation:</b> Lyophilized from 0.22 µm filtered solution in PBS, pH 7.4. Normally 5% trehalose and 5% mannitol are added as protectants before lyophilization.</p>		
Biological Activity	Not tested		
Storage and Shipping	<p><b>Storage:</b> It is recommended that the protein be aliquoted for optimal storage. Avoid repeated freeze-thaw cycles.</p> <ul style="list-style-type: none"><li>• Until expiry date, -20°C to -80°C as lyophilized proteins.</li><li>• 3 months, -20°C to -80°C under sterile conditions after reconstitution.</li></ul> <p><b>Shipping:</b> The product is shipped at ambient temperature. Upon receipt, store it immediately at the recommended temperature.</p>		
Reconstitution	Briefly centrifuge the tube before opening. Reconstitute at 0.1-0.5 mg/mL in sterile water.		
Background	<p>MCAM, also known as melanoma cell adhesion molecule (CD146) or MUC18, originally identified as a biomarker of melanoma progression, is a transmembrane glycoprotein belonging to the immunoglobulin (Ig) superfamily. Structurally, it consists of five Ig domains, a transmembrane domain, and a cytoplasmic region. A soluble form of CD146 has also been reported. In normal adult tissue, CD146 is primarily expressed by vascular endothelium and smooth muscle. CD146 is a key cell adhesion protein in vascular endothelial cell activity and angiogenesis, and has been used as marker of circulating endothelium cells (CECs).</p>		
References	<ol style="list-style-type: none"><li>1. Sers C. et al. (1993). Proc Natl Acad Sci U S A. 90(18):8514-8518.</li><li>2. Ouhtit A. et al. (2009). Biochim Biophys Acta. 1795(2):130-136.</li><li>3. Bardin N. et al. (1998). FEBS Lett. 421(1):12-14.</li><li>4. Bardin N. et al. (2009). Arterioscler Thromb Vasc Biol. 29(5):746-753.</li></ol>		
Synonyms	CD146, MCAM, Melanoma-associated antigen A32, Melanoma-associated antigen MUC18, MUC18		

## Selected Validation Data



Purity of Recombinant Human CD146 was determined by SDS-PAGE. The protein was resolved in an SDS-PAGE in reducing (R) and non-reducing (NR) conditions and stained using Coomassie blue.

For technical support and original validation data for this product please contact

T: 027-87531629

E: [Proteintech-CN@ptglab.com](mailto:Proteintech-CN@ptglab.com)

W: [ptgcn.com](http://ptgcn.com)

This product is exclusively available under Proteintech Group brand and is not available to purchase from any other manufacturer.