

For Research Use Only

# Recombinant Human STC1 protein (rFc Tag) (HPLC verified)



Catalog Number: Eg2922

## Basic Information

**Species:**  
Human

**Purity:**  
>90 %, SDS-PAGE<br>>90 %, SEC-HPLC

**Tag:**  
rFc Tag

## Technical Specifications

**Purity:**  
>90 %, SDS-PAGE<br>>90 %, SEC-HPLC

**Endotoxin Level:**  
<0.1 EU/ μg protein, LAL method

**Source:**  
HEK293-derived Human STC1 protein Thr18-Ala247 (Accession# P52823-1) with a rabbit IgG Fc tag at the C-terminus.

**GeneID:**  
6781

**Accession:**  
P52823-1

**Predicted Molecular Mass:**  
51.9 kDa

**SDS-PAGE:**  
55-65 kDa, reducing (R) conditions

**Formulation:**  
Lyophilized from 0.22 μm filtered solution in PBS, pH 7.4. Normally 5% trehalose and 5% mannitol are added as protectants before lyophilization.

## Biological Activity

Not tested

## Storage and Shipping

### Storage:

It is recommended that the protein be aliquoted for optimal storage. Avoid repeated freeze-thaw cycles.

- Until expiry date, -20°C to -80°C as lyophilized proteins.
- 3 months, -20°C to -80°C under sterile conditions after reconstitution.

### Shipping:

The product is shipped at ambient temperature. Upon receipt, store it immediately at the recommended temperature.

## Reconstitution

Briefly centrifuge the tube before opening. Reconstitute at 0.1-0.5 mg/mL in sterile water.

## Background

Stanniocalcin-1(STC1) is a hormone-like glycoprotein that has been shown to regulate calcium and phosphorus homeostasis. Tumorous STC1 could interact with Calreticulin (CRT) to trap CRT in mitochondria area, and then reduces membrane CRT.

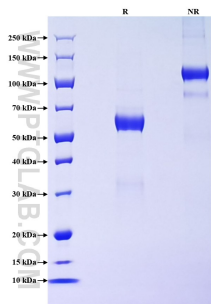
## References

1. Yeung BH, et al. Mol. Cell Endocrinol. 2012;349:272-280.
2. Lin H, et al. Cancer Cell. 2021;39:480-493.e486.

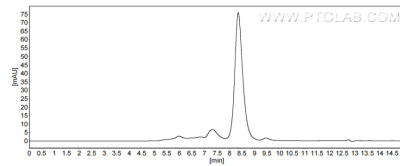
## Synonyms

Stanniocalcin-1, STC, STC-1

## Selected Validation Data



Purity of Recombinant Human STC1 was determined by SDS-PAGE. The protein was resolved in an SDS-PAGE in reducing (R) and non-reducing (NR) conditions and stained using Coomassie blue.



The purity of Human STC1 was greater than 90% as determined by SEC-HPLC.

For technical support and original validation data for this product please contact

T: 027-87531629

E: [Proteintech-CN@ptglab.com](mailto:Proteintech-CN@ptglab.com)

W: [ptgcn.com](http://ptgcn.com)

This product is exclusively available under Proteintech Group brand and is not available to purchase from any other manufacturer.