

For Research Use Only

Recombinant Human OLR1/LOX1 protein (rFc Tag)



Catalog Number: Eg2911

Basic Information	Species: Human	Purity: >90 %, SDS-PAGE	Tag: rFc Tag
-------------------	-------------------	----------------------------	-----------------

Technical Specifications

Purity:
>90 %, SDS-PAGE

Endotoxin Level:
<0.1 EU/ μ g protein, LAL method

Source:
HEK293-derived Human OLR1 protein Ser61-Gln273 (Accession# P78380-1) with a rabbit IgG Fc tag at the C-terminus.

GeneID:
4973

Accession:
P78380-1

Predicted Molecular Mass:
50.4 kDa

SDS-PAGE:
48-60 kDa, reducing (R) conditions

Formulation:
Lyophilized from 0.22 μ m filtered solution in PBS, pH 7.4. Normally 5% trehalose and 5% mannitol are added as protectants before lyophilization.

Biological Activity

Not tested

Storage and Shipping

Storage:
It is recommended that the protein be aliquoted for optimal storage. Avoid repeated freeze-thaw cycles.

- Until expiry date, -20°C to -80°C as lyophilized proteins.
- 3 months, -20°C to -80°C under sterile conditions after reconstitution.

Shipping:
The product is shipped at ambient temperature. Upon receipt, store it immediately at the recommended temperature.

Reconstitution

Briefly centrifuge the tube before opening. Reconstitute at 0.1-0.5 mg/mL in sterile water.

Background

OLR1/LOX-1 acts as a receptor, in the form of homodimer, that mediates the recognition, internalization, and degradation of oxidatively modified low density lipoprotein (oxLDL). OLR1 is predominantly expressed in endothelial cells and vascular-rich organs such as the placenta, lung, liver, and brain. OLR1 is a protein containing 273 amino acids with a calculated molecular mass of 31 kDa but an apparent molecular mass of 50 kDa, which may result from the glycosylation of four potential N-linked glycosylation sites located at the C-terminal domain.

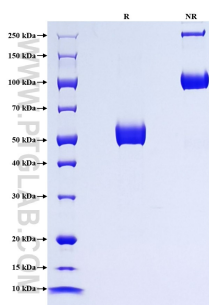
References

1. Sawamura T, et al. (1997). Nature. Mar 6;386(6620):73-77.
2. Park H, et al. (2005). J Biol Chem. 280(14):13593-13599.
3. Yamanaka S, et al. (1998). Genomics. Dec 1;54(2):191-9.

Synonyms

OLR1, CLEC8A, C-type lectin domain family 8 member A, hLOX 1, hLOX1

Selected Validation Data



Purity of Recombinant Human OLR1 was determined by SDS-PAGE. The protein was resolved in an SDS-PAGE in reducing (R) and non-reducing (NR) conditions and stained using Coomassie blue.

For technical support and original validation data for this product please contact

T: 027-87531629

E: Proteintech-CN@ptglab.com

W: ptgcn.com

This product is exclusively available under Proteintech Group brand and is not available to purchase from any other manufacturer.