

For Research Use Only

# Recombinant Mouse SLPI protein (rFc Tag)



Catalog Number: Eg2905

## Basic Information

**Species:**  
Mouse

**Purity:**  
>90 %, SDS-PAGE

**Tag:**  
rFc Tag

## Technical Specifications

**Purity:**  
>90 %, SDS-PAGE

**Endotoxin Level:**  
<0.1 EU/  $\mu$ g protein, LAL method

**Source:**  
HEK293-derived Mouse SLPI protein Gly26-Met131 (Accession# P97430) with a rabbit IgG Fc tag at the C-terminus.

**GeneID:**  
20568

**Accession:**  
P97430

**Predicted Molecular Mass:**  
37.3 kDa

**SDS-PAGE:**  
38-43 kDa, reducing (R) conditions

**Formulation:**  
Lyophilized from 0.22  $\mu$ m filtered solution in PBS, pH 7.4. Normally 5% trehalose and 5% mannitol are added as protectants before lyophilization.

## Biological Activity

Not tested

## Storage and Shipping

### Storage:

It is recommended that the protein be aliquoted for optimal storage. Avoid repeated freeze-thaw cycles.

- Until expiry date, -20°C to -80°C as lyophilized proteins.
- 3 months, -20°C to -80°C under sterile conditions after reconstitution.

### Shipping:

The product is shipped at ambient temperature. Upon receipt, store it immediately at the recommended temperature.

## Reconstitution

Briefly centrifuge the tube before opening. Reconstitute at 0.1-0.5 mg/mL in sterile water.

## Background

Secretory leukocyte protease inhibitor (SLPI) is also named as Antileukoproteinase (ALP), BLPI, HUSI-1, WAP4, WFDC4 and mucus proteinase inhibitor (MPI). The SLPI is a multifunctional protein involved in the modulation of immunological response and the inhibition of protease activities. SLPI acts as an inhibitor of proteases, exerts antibacterial properties, and suppresses the transcription of proinflammatory genes through the nuclear factor-kappa B (NF- $\kappa$ B) pathway. SLPI is a serine protease inhibitor and also a critical mediator that is involved in the PTH-mediated shift to the osteoblastic phase. Slpi induction in osteoblasts enhances its differentiation, and increases osteoblast-osteoclast contact, thereby suppressing osteoclastic function. SLPI is an evolutionarily conserved, pleiotropic protein expressed at mucosal surfaces, mainly by epithelial cells. SLPI maintains homeostasis at barrier tissues by preventing tissue destruction and regulating the threshold of inflammatory immune responses, while protecting the host from infection. However, as recent studies demonstrate that overexpression of SLPI increases the metastatic potential of epithelial tumors. The role of this protein as a regulatory agent has been implicated in various types of cancer.

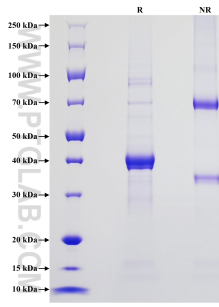
## References

1. Qu W, Zhang X, Liu SS, et al. Pathol Res Pract. 2023;248:154633.
2. Carter, Kimberley et al. Int J Lab Hematol vol. 29,2 (2007): 92-110.
3. Nugteren, Sandrine et al. Cytokine Growth Factor Rev vol. 59, (2021): 22-35.

## Synonyms

ALP, Antileukoproteinase, Secretory leukocyte protease inhibitor

## Selected Validation Data



Purity of Recombinant Mouse SLPI was determined by SDS-PAGE. The protein was resolved in an SDS-PAGE in reducing (R) and non-reducing (NR) conditions and stained using Coomassie blue.

For technical support and original validation data for this product please contact

T: 027-87531629

E: [Proteintech-CN@ptglab.com](mailto:Proteintech-CN@ptglab.com)

W: [ptgcn.com](http://ptgcn.com)

This product is exclusively available under Proteintech Group brand and is not available to purchase from any other manufacturer.