

For Research Use Only

Recombinant Human KLK11 protein (rFc Tag)



Catalog Number: Eg2890

Basic Information

Species:
Human

Purity:
>90 %, SDS-PAGE

Tag:
rFc Tag

Technical Specifications

Purity:

>90 %, SDS-PAGE

Endotoxin Level:

<0.1 EU/ μ g protein, LAL method

Source:

HEK293-derived Human KLK11 protein Ala19-Ser250 (Accession# Q9UBX7-2) with a rabbit IgG Fc tag at the C-terminus.

GeneID:

11012

Accession:

Q9UBX7-2

Predicted Molecular Mass:

51.1 kDa

SDS-PAGE:

55-68 kDa, reducing (R) conditions

Formulation:

Lyophilized from 0.22 μ m filtered solution in PBS, pH 7.4. Normally 5% trehalose and 5% mannitol are added as protectants before lyophilization.

Biological Activity

Not tested

Storage and Shipping

Storage:

It is recommended that the protein be aliquoted for optimal storage. Avoid repeated freeze-thaw cycles.

- Until expiry date, -20°C to -80°C as lyophilized proteins.
- 3 months, -20°C to -80°C under sterile conditions after reconstitution.

Shipping:

The product is shipped at ambient temperature. Upon receipt, store it immediately at the recommended temperature.

Reconstitution

Briefly centrifuge the tube before opening. Reconstitute at 0.1-0.5 mg/mL in sterile water.

Background

KLK11 is a member of the human kallikrein gene family. KLK11 was originally identified in the human hippocampus; later studies documented that KLK11 is widely expressed in a number of tissues. KLK11 is an arresting cancer-related gene that is implicated in various physiological and pathological processes. For instance, KLK11 suppresses esophageal squamous cell carcinoma by inhibiting cellular proliferation via inhibition of the Wnt/ β -catenin signaling pathway. Evidence suggests its involvement in carcinogenesis, and it is recognized as a potential novel biomarker for cancers such as ovarian and prostate cancer.

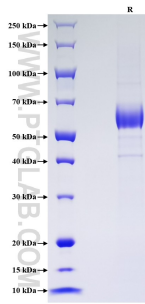
References

- 1.Wang, Yi et al. BMC cardiovascular disorders vol. 21,1 (2021): 266.
- 2.He, Xin et al. American journal of cancer research vol. 9,10 (2019): 2264-2277.
- 3.Zhao, Ruimin et al. Journal of bioenergetics and biomembranes vol. 53,1 (2021): 85-96.
- 4.Paliouras, Miltiadis et al. Cancer letters vol. 249,1 (2007): 61-79.

Synonyms

Kallikrein 11, EC:3.4.21.-, Kallikrein11, Kallikrein-11, Kallikrein-11 inactive chain 1

Selected Validation Data



Purity of Recombinant Human KLK11 was determined by SDS-PAGE. The protein was resolved in an SDS-PAGE in reducing (R) conditions and stained using Coomassie blue.

For technical support and original validation data for this product please contact

T: 027-87531629

E: Proteintech-CN@ptglab.com

W: ptgcn.com

This product is exclusively available under Proteintech Group brand and is not available to purchase from any other manufacturer.