

For Research Use Only

Recombinant Human Mammaglobin A protein (rFc Tag)



Catalog Number: Eg2887

Basic Information	Species: Human	Purity: >90 %, SDS-PAGE	Tag: rFc Tag
-------------------	-------------------	----------------------------	-----------------

Technical Specifications

Purity:
>90 %, SDS-PAGE

Endotoxin Level:
<0.1 EU/ μ g protein, LAL method

Source:
HEK293-derived Human Mammaglobin A protein Gly19-Phe93 (Accession# Q13296-1) with a rabbit IgG Fc tag at the C-terminus.

GeneID:
4250

Accession:
Q13296-1

Predicted Molecular Mass:
34.5 kDa

SDS-PAGE:
36-48 kDa, reducing (R) conditions

Formulation:
Lyophilized from 0.22 μ m filtered solution in PBS, pH 7.4. Normally 5% trehalose and 5% mannitol are added as protectants before lyophilization.

Biological Activity

Not tested

Storage and Shipping

Storage:
It is recommended that the protein be aliquoted for optimal storage. Avoid repeated freeze-thaw cycles.

- Until expiry date, -20°C to -80°C as lyophilized proteins.
- 3 months, -20°C to -80°C under sterile conditions after reconstitution.

Shipping:
The product is shipped at ambient temperature. Upon receipt, store it immediately at the recommended temperature.

Reconstitution

Briefly centrifuge the tube before opening. Reconstitute at 0.1-0.5 mg/mL in sterile water.

Background

SCGB2A2 (secretoglobin family 2A member 2), also known as mammaglobin A, is a glycoprotein that belongs to a larger family called uteroglobin. SCGB2A2 is a breast cancer-associated antigen almost exclusively over-expressed in primary and metastatic human breast cancers, making it a specific molecular marker and a potential therapeutic target for BC. It is predicted to be involved in the androgen receptor signaling pathway and is believed to be located in the extracellular region, active in the extracellular space.

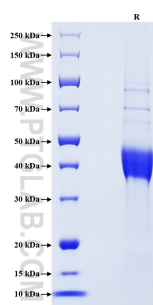
References

1. Talaat, I. M. et al. (2020). Sci Rep.10(1):13061.
2. Shi CX. et al. (2004). Mol Ther. 10(4), 758-767.
3. Zafrakas M. et al. (2006). BMC Cancer. 6:88.

Synonyms

Mammaglobin A, SCGB2A2, hMAM, Mammaglobin 1, Mammaglobin1

Selected Validation Data



Purity of Recombinant Human Mammaglobin A was determined by SDS-PAGE. The protein was resolved in an SDS-PAGE in reducing (R) conditions and stained using Coomassie blue.

For technical support and original validation data for this product please contact

T: 027-87531629

E: Proteintech-CN@ptglab.com

W: ptgcn.com

This product is exclusively available under Proteintech Group brand and is not available to purchase from any other manufacturer.