

For Research Use Only

Recombinant Human CCL15 protein (rFc Tag) (HPLC verified)



Catalog Number: Eg2877

Basic Information

Species:
Human

Purity:
>90 %, SDS-PAGE
>90 %, SEC-HPLC

Tag:
rFc Tag

Technical Specifications

Purity:
>90 %, SDS-PAGE
>90 %, SEC-HPLC

Endotoxin Level:
<0.1 EU/ μ g protein, LAL method

Source:
HEK293-derived Human CCL15 protein Ser46-Ile113 (Accession# Q16663) with a rabbit IgG Fc tag at the C-terminus.

GeneID:
6359

Accession:
Q16663

Predicted Molecular Mass:
33.5 kDa

SDS-PAGE:
34-37 kDa, reducing (R) conditions

Formulation:
Lyophilized from 0.22 μ m filtered solution in PBS, pH 7.4. Normally 5% trehalose and 5% mannitol are added as protectants before lyophilization.

Biological Activity

Not tested

Storage and Shipping

Storage:

It is recommended that the protein be aliquoted for optimal storage. Avoid repeated freeze-thaw cycles.

- Until expiry date, -20°C to -80°C as lyophilized proteins.
- 3 months, -20°C to -80°C under sterile conditions after reconstitution.

Shipping:

The product is shipped at ambient temperature. Upon receipt, store it immediately at the recommended temperature.

Reconstitution

Briefly centrifuge the tube before opening. Reconstitute at 0.1-0.5 mg/mL in sterile water.

Background

CCL15, also known as macrophage inhibitory protein 5 (MIP-5), leukocyte chemokine 1 (Lkn-1), and human CC chemokine 2 (HCC-2), is a small cytokine that belongs to the CC chemokine family. This family of chemokines is located on human chromosome 17 and shares a gene sequence similarity with CC motif chemokine ligand 5 (CCL5) and CC motif chemokine ligand 3 (CCL3). CCL15 is expressed in certain leukocytes and macrophages in the liver, small intestine, colon, and lung. Chemokines are a class of small molecule proteins that bind to the corresponding cell surface receptors and participate in a variety of physiological, pathological, and immunological processes (PMID: 30881115).

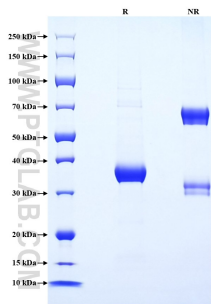
References

1. Zu G. et al. (2019). Cancer Manag Res. 11:1881-1892.

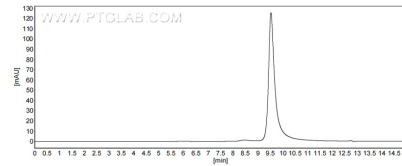
Synonyms

CC motif chemokine 15, CCL-15, Chemokine CC 2

Selected Validation Data



Purity of Recombinant Human CCL15 was determined by SDS-PAGE. The protein was resolved in an SDS-PAGE in reducing (R) and non-reducing (NR) conditions and stained using Coomassie blue.



The purity of Human CCL15 was greater than 90% as determined by SEC-HPLC.

For technical support and original validation data for this product please contact

T: 027-87531629

E: Proteintech-CN@ptglab.com

W: ptgcn.com

This product is exclusively available under Proteintech Group brand and is not available to purchase from any other manufacturer.