

Recombinant Mouse Mesothelin protein (rFc Tag)(HPLC verified)

Catalog Number: Eg2864

Basic Information

Species:
Mouse**Purity:**
>90 %, SDS-PAGE
>90 %, SEC-HPLC**Tag:**
rFc Tag

Technical Specifications

Purity:
>90 %, SDS-PAGE
>90 %, SEC-HPLC**Endotoxin Level:**
<0.1 EU/ µg protein, LAL method**Source:**
HEK293-derived Mouse Mesothelin protein Asp298-Ser600 (Accession# Q61468) with a rabbit IgG Fc tag at the C-terminus.**GeneID:**
56047**Accession:**
Q61468**Predicted Molecular Mass:**
60.2 kDa**SDS-PAGE:**
62-80 kDa, reducing (R) conditions**Formulation:**
Lyophilized from 0.22 µm filtered solution in PBS, pH 7.4. Normally 5% trehalose and 5% mannitol are added as protectants before lyophilization.

Biological Activity

Not tested

Storage and Shipping

Storage:

It is recommended that the protein be aliquoted for optimal storage. Avoid repeated freeze-thaw cycles.

- Until expiry date, -20°C to -80°C as lyophilized proteins.
- 3 months, -20°C to -80°C under sterile conditions after reconstitution.

Shipping:

The product is shipped at ambient temperature. Upon receipt, store it immediately at the recommended temperature.

Reconstitution

Briefly centrifuge the tube before opening. Reconstitute at 0.1-0.5 mg/mL in sterile water.

Background

Mesothelin (MSLN) is a cell-surface glycoprotein with normal expression restricted to mesothelial cells lining the pleura, peritoneum, and pericardium. MSLN is highly expressed in mesothelioma, lung, pancreas, breast, ovarian, and other cancers as a cell-surface antigen implicated in tumor invasion. MSLN is considered to be involved in several mechanisms of cancer pathogenesis. MSLN is emerging as an attractive target for cancer immunotherapy, considering its low expression on normal mesothelial cells and high expression in a broad spectrum of solid tumors.

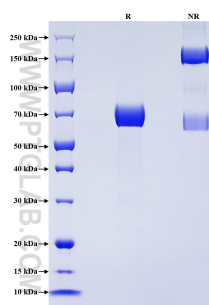
References

1. Morello A. et al. (2016) Cancer Discov. 6(2):133-146.
2. Klampatsa A. et al. (2021) Expert Opin Biol Ther. 21(4):473-486.
3. Cao B. et al. (2021) Int J Biol Sci. 17(14):3850-3861.

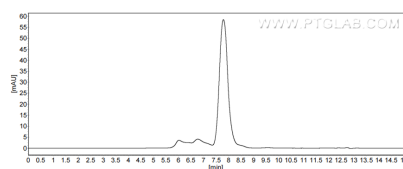
Synonyms

Megakaryocyte-potentiating factor, Mes, Mesothelin, cleaved form, Mpf, Msln

Selected Validation Data



Purity of Recombinant Mouse Mesothelin was determined by SDS-PAGE. The protein was resolved in an SDS-PAGE in reducing (R) and non-reducing (NR) conditions and stained using Coomassie blue.



The purity of Mouse Mesothelin was greater than 90% as determined by SEC-HPLC.

For technical support and original validation data for this product please contact

T: 027-87531629

E: Proteintech-CN@ptglab.com

W: ptgcn.com

This product is exclusively available under Proteintech Group brand and is not available to purchase from any other manufacturer.