

For Research Use Only

Recombinant Mouse Epha6 protein (rFc Tag)(HPLC verified)



Catalog Number: Eg2857

Basic Information

Species:
Mouse

Purity:
>90 %, SDS-PAGE
>90%, SEC-HPLC

Tag:
rFc Tag

Technical Specifications

Purity:
>90 %, SDS-PAGE
>90%, SEC-HPLC

Endotoxin Level:
<0.1 EU/ μ g protein, LAL method

Source:
HEK293-derived Mouse Epha6 protein Ser28-Gln546 (Accession# Q62413) with a rabbit IgG Fc tag at the C-terminus.

GeneID:
13840

Accession:
Q62413

Predicted Molecular Mass:
84.1 kDa

SDS-PAGE:
85-110 kDa, reducing (R) conditions

Formulation:
Lyophilized from 0.22 μ m filtered solution in PBS, pH 7.4. Normally 5% trehalose and 5% mannitol are added as protectants before lyophilization.

Biological Activity

Not tested

Storage and Shipping

Storage:

It is recommended that the protein be aliquoted for optimal storage. Avoid repeated freeze-thaw cycles.

- Until expiry date, -20°C to -80°C as lyophilized proteins.
- 3 months, -20°C to -80°C under sterile conditions after reconstitution.

Shipping:

The product is shipped at ambient temperature. Upon receipt, store it immediately at the recommended temperature.

Reconstitution

Briefly centrifuge the tube before opening. Reconstitute at 0.1-0.5 mg/mL in sterile water.

Background

Epha6 (Eph receptor A6) is a receptor tyrosine kinase that binds to a mixed GPI-anchored heparin-A family ligand residing on neighboring cells, resulting in contact-dependent bidirectional signaling to neighboring cells. Epha6 plays a critical role in brain development and/or behavioral regulation, and the inactivation of its gene leads to impaired learning and memory. Epha6 is associated with a variety of diseases, its overexpression leads to the progression of human prostate cancer, and EphA6 overexpression has been identified as an important independent prognostic indicator in breast cancer.

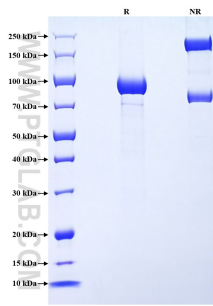
References

1. Das G, et al. Cell Biosci. (2016). 6:48.
2. Zhou D, et al. Oncol Lett. (2018).15(4):5257-5263.
3. Li S, et al. Oncotarget. (2015). 6(26):22587-97.

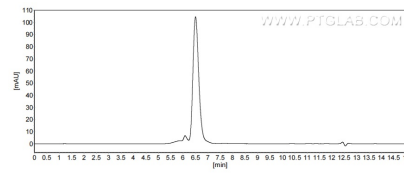
Synonyms

receptor protein-tyrosine kinase, EC:2.7.10.1

Selected Validation Data



Purity of Recombinant Mouse Epha6 was determined by SDS-PAGE. The protein was resolved in an SDS-PAGE in reducing (R) and non-reducing (NR) conditions and stained using Coomassie blue.



The purity of Mouse Epha6 was greater than 90% as determined by SEC-HPLC.

For technical support and original validation data for this product please contact

T: 027-87531629

E: Proteintech-CN@ptglab.com

W: ptgcn.com

This product is exclusively available under Proteintech Group brand and is not available to purchase from any other manufacturer.