

For Research Use Only

# Recombinant Mouse ARMETL1 protein (rFc Tag) (HPLC verified)



Catalog Number: Eg2845

## Basic Information

**Species:**  
Mouse

**Purity:**  
>90 %, SDS-PAGE<br>>90 %, SEC-HPLC

**Tag:**  
rFc Tag

## Technical Specifications

**Purity:**  
>90 %, SDS-PAGE<br>>90 %, SEC-HPLC

**Endotoxin Level:**  
<0.1 EU/  $\mu$ g protein, LAL method

**Source:**  
HEK293-derived Mouse ARMETL1 protein Leu27-Leu187 (Accession# Q8CC36) with a rabbit IgG Fc tag at the C-terminus.

**GeneID:**  
227526

**Accession:**  
Q8CC36

**Predicted Molecular Mass:**  
44.4 kDa

**SDS-PAGE:**  
40-48 kDa, reducing (R) conditions

**Formulation:**  
Lyophilized from 0.22  $\mu$ m filtered solution in PBS, pH 7.4. Normally 5% trehalose and 5% mannitol are added as protectants before lyophilization.

## Biological Activity

Not tested

## Storage and Shipping

### Storage:

It is recommended that the protein be aliquoted for optimal storage. Avoid repeated freeze-thaw cycles.

- Until expiry date, -20°C to -80°C as lyophilized proteins.
- 3 months, -20°C to -80°C under sterile conditions after reconstitution.

### Shipping:

The product is shipped at ambient temperature. Upon receipt, store it immediately at the recommended temperature.

## Reconstitution

Briefly centrifuge the tube before opening. Reconstitute at 0.1-0.5 mg/mL in sterile water.

## Background

ARMETL1, also known as Cerebral Dopamine Neurotrophic Factor (CDNF), is a secreted protein with eight conserved cysteine residues. It is a novel neurotrophic factor with strong trophic activity on dopaminergic neurons, comparable to that of glial cell line-derived neurotrophic factor (GDNF). ARMETL1 is known for its neuroprotective and reparative effects, particularly in models of Parkinson's disease and stroke, and is currently in clinical trials for Parkinson's disease.

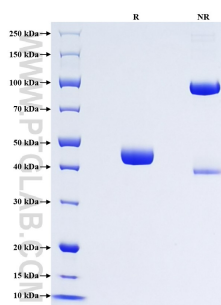
## References

- 1.Albert K, et al. (2019). Croat Med J. 60(2):99-108.
- 2.Lindholm P, et al. (2007). Nature. 448(7149):73-77.
- 3.Lohoff FW, et al. (2009). Neurosci Lett. 453(3):199-203.

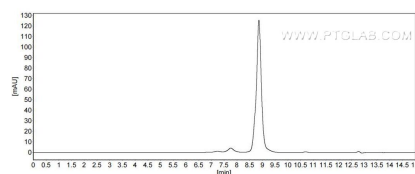
## Synonyms

ARMET-like protein 1, Cdnf, Cerebral dopamine neurotrophic factor, Conserved dopamine neurotrophic factor

## Selected Validation Data



Purity of Recombinant Mouse ARMETL1 was determined by SDS-PAGE. The protein was resolved in an SDS-PAGE in reducing (R) and non-reducing (NR) conditions and stained using Coomassie blue.



The purity of Mouse ARMETL1 was greater than 90% as determined by SEC-HPLC.