

For Research Use Only

Recombinant Human IL-25/IL-17E protein (rFc Tag)



Catalog Number: Eg2803

Basic Information

Species:
Human

Purity:
>90 %, SDS-PAGE

Tag:
rFc Tag

Technical Specifications

Purity:
>90 %, SDS-PAGE

Endotoxin Level:
<0.1 EU/ μ g protein, LAL method

Source:
HEK293-derived Human IL-25 protein Tyr33-Gly177 (Accession# Q9H293-1) with a rabbit IgG Fc tag at the C-terminus.

GeneID:
64806

Accession:
Q9H293-1

Predicted Molecular Mass:
42.3 kDa

SDS-PAGE:
43-55 kDa, reducing (R) conditions

Formulation:
Lyophilized from 0.22 μ m filtered solution in PBS, pH 7.4. Normally 5% trehalose and 5% mannitol are added as protectants before lyophilization.

Biological Activity

Not tested

Storage and Shipping

Storage:

It is recommended that the protein be aliquoted for optimal storage. Avoid repeated freeze-thaw cycles.

- Until expiry date, -20°C to -80°C as lyophilized proteins.
- 3 months, -20°C to -80°C under sterile conditions after reconstitution.

Shipping:

The product is shipped at ambient temperature. Upon receipt, store it immediately at the recommended temperature.

Reconstitution

Briefly centrifuge the tube before opening. Reconstitute at 0.1-0.5 mg/mL in sterile water.

Background

Interleukin-25 (IL-25), also known as IL-17E, is a unique member of the interleukin-17 (IL-17) cytokine family. IL-25 is a key orchestrator of type 2 immune responses, which are central to host defense against helminths, the pathogenesis of allergic disorders, and tissue repair. Its expression is not confined to classical immune cells but is notably abundant in various epithelial cell lineages, positioning it as a critical sentinel at mucosal barriers. IL-25 is critically involved in allergic disorders such as asthma, allergic rhinitis, and chronic rhinosinusitis with nasal polyps (CRSwNP). Its levels in induced sputum correlate with disease severity, eosinophil counts, and lung function in asthmatic children. IL-25 exhibits a dual and complex role in oncology. In colorectal cancer (CRC), its expression correlates with poor survival. Conversely, in breast cancer, serum IL-25 levels are lower in patients compared to healthy subjects, and reduced IL-25 is associated with higher tumor grade and stage.

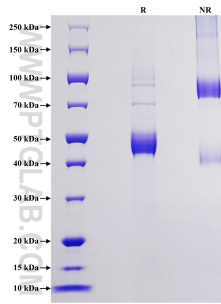
References

- 1.Yuan, Qingfang et al. Biomarker research vol. 11,1 (2023): 36.
- 2.Ji, Ming et al. Nature vol. 529,7585 (2016): 221-5.
- 3.Abdu, Semah et al. Allergy vol. 80,4 (2025): 965-975.
- 4.Zhao, Zewei et al. Frontiers in immunology vol. 13, (2022): 837262.
- 5.Shokrollahi Barough, Mahdieh et al. J Interferon Cytokine Res vol. 40,3 (2020): 139-144.

Synonyms

IL25, IL 17E, IL 25, IL17E, IL-17E

Selected Validation Data



Purity of Recombinant Human IL-25 was determined by SDS-PAGE. The protein was resolved in an SDS-PAGE in reducing (R) and non-reducing (NR) conditions and stained using Coomassie blue.

For technical support and original validation data for this product please contact

T: 027-87531629

E: Proteintech-CN@ptglab.com

W: ptgcn.com

This product is exclusively available under Proteintech Group brand and is not available to purchase from any other manufacturer.