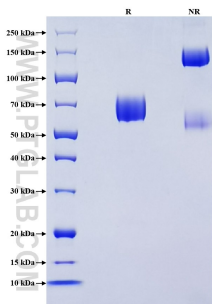


Recombinant Mouse SLAM/CD150 protein (rFc Tag) (HPLC verified)

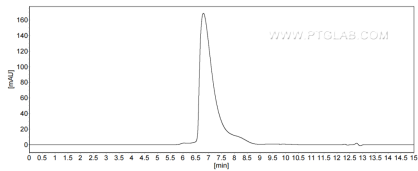
Catalog Number: Eg2787

Basic Information	Species: Mouse	Purity: >90 %, SDS-PAGE >90 %, SEC-HPLC	Tag: rFc Tag
Technical Specifications	Purity: >90 %, SDS-PAGE >90 %, SEC-HPLC Endotoxin Level: <0.1 EU/ µg protein, LAL method Source: HEK293-derived Mouse SLAM protein Thr25-Pro242 (Accession# Q9QUM4-1) with a rabbit IgG Fc tag at the C-terminus. GeneID: 27218 Accession: Q9QUM4-1 Predicted Molecular Mass: 50.2 kDa SDS-PAGE: 60-80 kDa, reducing (R) conditions Formulation: Lyophilized from 0.22 µm filtered solution in PBS, pH 7.4. Normally 5% trehalose and 5% mannitol are added as protectants before lyophilization.		
Biological Activity	Not tested		
Storage and Shipping	Storage: It is recommended that the protein be aliquoted for optimal storage. Avoid repeated freeze-thaw cycles. <ul style="list-style-type: none">• Until expiry date, -20°C to -80°C as lyophilized proteins.• 3 months, -20°C to -80°C under sterile conditions after reconstitution. Shipping: The product is shipped at ambient temperature. Upon receipt, store it immediately at the recommended temperature.		
Reconstitution	Briefly centrifuge the tube before opening. Reconstitute at 0.1-0.5 mg/mL in sterile water.		
Background	SLAMF1 (Signaling Lymphocytic Activation Molecule Family Member 1), also known as CD150, is a protein-coding gene that plays a significant role in the immune system, particularly in the activation and regulation of lymphocytes. SLAMF1 is predominantly expressed in hematopoietic cells, including NK cells, T cells, dendritic cells (DCs), neutrophils, macrophages, and notably mast cells (MCs) and eosinophils (Eos). Its expression is crucial for the migration of dendritic cells and macrophages, enhancing phagocytosis by macrophages, and Treg and T cell functions. SLAMF1 is a type I transmembrane glycoprotein with an extracellular region containing an N-terminal V-Ig domain followed by a C2-Ig domain, a transmembrane region, and an intracellular cytoplasmic tail containing tyrosine-based switch motifs (ITSM). It is part of the CD2 subfamily of the immunoglobulin (Ig) superfamily and is involved in both innate and adaptive immune responses through homophilic or heterophilic interactions.		
References	<ol style="list-style-type: none">1. Idit Shachar. et al. (2019). Clin Immunol. 204:23-30.2. Jennifer L Cannons. et al. (2011). Annu Rev Immunol. 29:665-705.3. Christopher C Fraser. et al. (2002). Immunogenetics. 53(10-11):843-850.		
Synonyms	CD150, Signaling lymphocytic activation molecule, Slam, SLAM family member 1, Slamf1		

Selected Validation Data



Purity of Recombinant Mouse SLAM was determined by SDS-PAGE. The protein was resolved in an SDS-PAGE in reducing (R) and non-reducing (NR) conditions and stained using Coomassie blue.



The purity of Mouse SLAM was greater than 90% as determined by SEC-HPLC.