

Recombinant Human ENPEP protein (rFc Tag)

Catalog Number: Eg2736

Basic Information

Species:
Human**Purity:**
>90 %, SDS-PAGE**Tag:**
rFc Tag

Technical Specifications

Purity:

>90 %, SDS-PAGE

Endotoxin Level:

<0.1 EU/ µg protein, LAL method

Source:

HEK293-derived Human ENPEP protein Arg41-Gly957 (Accession# Q07075) with a rabbit IgG Fc tag at the C-terminus.

GeneID:

2028

Accession:

Q07075

Predicted Molecular Mass:

131.1 kDa

SDS-PAGE:

130-150 kDa, reducing (R) conditions

Formulation:

Lyophilized from 0.22 µm filtered solution in PBS, pH 7.4. Normally 5% trehalose and 5% mannitol are added as protectants before lyophilization.

Biological Activity

Not tested

Storage and Shipping

Storage:

It is recommended that the protein be aliquoted for optimal storage. Avoid repeated freeze-thaw cycles.

- Until expiry date, -20°C to -80°C as lyophilized proteins.
- 3 months, -20°C to -80°C under sterile conditions after reconstitution.

Shipping:

The product is shipped at ambient temperature. Upon receipt, store it immediately at the recommended temperature.

Reconstitution

Briefly centrifuge the tube before opening. Reconstitute at 0.1-0.5 mg/mL in sterile water.

Background

ENPEP, or glutamyl aminopeptidase, is a type II integral membrane protein with an extracellular zinc-binding domain. ENPEP plays a significant role in the renin-angiotensin system (RAS) by participating in the catabolic pathway, forming angiotensin III from angiotensin II through the hydrolysis of the N-terminal aspartate (or glutamate), thereby regulating blood pressure and blood vessel formation. ENPEP is widely expressed in a subset of vascular smooth muscle cells, likely pericytes, in systemic vasculature, the heart, and the brain. It is expressed at high levels in the epithelial cells of the kidney glomerulus and proximal tubule cells, where it contributes to the regulation of blood pressure and may contribute to the risk of atrial fibrillation, angiogenesis, hypertension, and tumorigenesis.

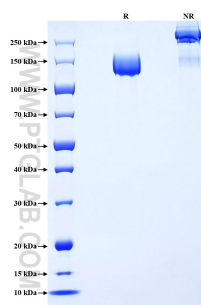
References

1. Roger S Holmes. et al. (2017). J Data Mining Genomics Proteomics. 8(2):2.
2. Antti Arppo. et al.(2024). PLoS One.19(12):e0307731.
3. Aoyun Wang. et al. (2022). Cancer Med. 11(3):880-887.

Synonyms

ENPEP, AP A, APA, AP-A, CD249

Selected Validation Data



Purity of Recombinant Human ENPEP was determined by SDS-PAGE. The protein was resolved in an SDS-PAGE in reducing (R) and non-reducing (NR) conditions and stained using Coomassie blue.

For technical support and original validation data for this product please contact

T: 027-87531629

E: Proteintech-CN@ptglab.com

W: ptgcn.com

This product is exclusively available under Proteintech Group brand and is not available to purchase from any other manufacturer.