

For Research Use Only

# Recombinant Mouse CD300LG protein (rFc Tag)



Catalog Number: Eg2731

## Basic Information

**Species:**  
Mouse

**Purity:**  
>90 %, SDS-PAGE

**Tag:**  
rFc Tag

## Technical Specifications

**Purity:**  
>90 %, SDS-PAGE

**Endotoxin Level:**  
<0.1 EU/  $\mu$ g protein, LAL method

**Source:**  
HEK293-derived Mouse CD300LG protein Leu19-Ile284 (Accession# Q1ERP8-3) with a rabbit IgG Fc tag at the C-terminus.

**GeneID:**  
52685

**Accession:**  
Q1ERP8-3

**Predicted Molecular Mass:**  
54.5 kDa

**SDS-PAGE:**  
58-100 kDa, reducing (R) conditions

**Formulation:**  
Lyophilized from 0.22  $\mu$ m filtered solution in PBS, pH 7.4. Normally 5% trehalose and 5% mannitol are added as protectants before lyophilization.

## Biological Activity

Not tested

## Storage and Shipping

### Storage:

It is recommended that the protein be aliquoted for optimal storage. Avoid repeated freeze-thaw cycles.

- Until expiry date, -20°C to -80°C as lyophilized proteins.
- 3 months, -20°C to -80°C under sterile conditions after reconstitution.

### Shipping:

The product is shipped at ambient temperature. Upon receipt, store it immediately at the recommended temperature.

## Reconstitution

Briefly centrifuge the tube before opening. Reconstitute at 0.1-0.5 mg/mL in sterile water.

## Background

CD300LG, also known as CD300 molecule-like family member G, is a part of the CD300 antigen-like family. It is known to have at least four isoforms in both species. The immunoglobulin (Ig) V-like domain of CD300LG exhibits approximately 35% identity to those of the polymeric Ig receptor (pIgR) and Fc  $\alpha$  /  $\mu$  R. mouse CD300LG proteins are uniquely expressed on capillary endothelium. CD300LG may play a significant role in molecular transport across the capillary endothelium. In addition, CD300LG is capable of bidirectional transcytosis in assays using polarized MDCK epithelial cells.

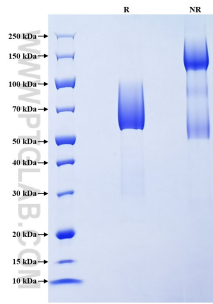
## References

1. Hiroyuki Takatsu, et al. (2006). *Biochem Biophys Res Commun.* 15:348(1):183-191.
2. Randall S Davis, et al. (2005). *Eur J Immunol.* 35(3):674-680.
3. B.J. Green, et al. (1998). *Int. Immunol.* 10(7):891-899.

## Synonyms

CD300 antigen-like family member G, CD300g, Cd300lg, Clm9, CLM-9

## Selected Validation Data



Purity of Recombinant Mouse CD300LG was determined by SDS-PAGE. The protein was resolved in an SDS-PAGE in reducing (R) and non-reducing (NR) conditions and stained using Coomassie blue.

For technical support and original validation data for this product please contact

T: 027-87531629

E: [Proteintech-CN@ptglab.com](mailto:Proteintech-CN@ptglab.com)

W: [ptgcn.com](http://ptgcn.com)

This product is exclusively available under Proteintech Group brand and is not available to purchase from any other manufacturer.