

For Research Use Only

Recombinant Mouse CLEC12A protein (rFc Tag) (HPLC verified)



Catalog Number: Eg2726

Basic Information

Species:
Mouse

Purity:
>90 %, SDS-PAGE
>90 %, SEC-HPLC

Tag:
rFc Tag

Technical Specifications

Purity:
>90 %, SDS-PAGE
>90 %, SEC-HPLC

Endotoxin Level:
<0.1 EU/ µg protein, LAL method

Source:
HEK293-derived Mouse CLEC12A protein Tyr65-Arg267 (Accession# Q504P2) with a rabbit IgG Fc tag at the C-terminus.

GeneID:
232413

Accession:
Q504P2

Predicted Molecular Mass:
49.8 kDa

SDS-PAGE:
52-65 kDa, reducing (R) conditions

Formulation:
Lyophilized from 0.22 µm filtered solution in PBS, pH 7.4. Normally 5% trehalose and 5% mannitol are added as protectants before lyophilization.

Biological Activity

Not tested

Storage and Shipping

Storage:

It is recommended that the protein be aliquoted for optimal storage. Avoid repeated freeze-thaw cycles.

- Until expiry date, -20°C to -80°C as lyophilized proteins.
- 3 months, -20°C to -80°C under sterile conditions after reconstitution.

Shipping:

The product is shipped at ambient temperature. Upon receipt, store it immediately at the recommended temperature.

Reconstitution

Briefly centrifuge the tube before opening. Reconstitute at 0.1-0.5 mg/mL in sterile water.

Background

CLEC12A, also known as CD371, MICL, DCAL-2 or CLL-1, is a type II transmembrane glycoprotein and a member of the C-type lectin superfamily. This protein, which contains a single C-type lectin-like domain and a cytoplasmic immunoreceptor tyrosine-based inhibitory motif (ITIM), is related to LOX-1 and Dectin-1 and is variably spliced and highly N-glycosylated. Its ITIM sequence recruits the tyrosine phosphatases SHP-1 and SHP-2 to negatively regulate Syk signaling. In humans, CLEC12A is mainly expressed on myeloid cells, being found on monocytes, granulocytes, macrophages and DC subsets, and at lower levels on CD4+ T cells.

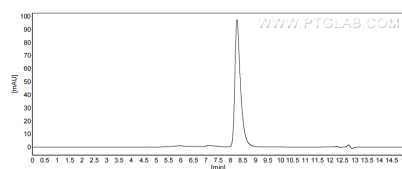
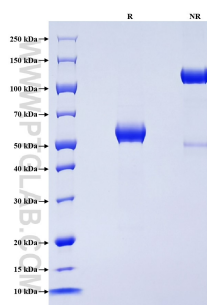
References

- 1.Marshall AS, et al. (2004) J Biol Chem. 9;279(15):14792-802.
- 2.Alvarez B, et al. (2020) Front Immunol. 13;11:863.
- 3.Marshall AS, et al. (2004) J Biol Chem. 9;279(15):14792-802.

Synonyms

CD371, CLL-1, C-type lectin domain family 12 member A, C-type lectin-like molecule 1, MICL

Selected Validation Data



Purity of Recombinant Mouse CLEC12A was determined by SDS-PAGE. The protein was resolved in an SDS-PAGE in reducing (R) and non-reducing (NR) conditions and stained using Coomassie blue.

For technical support and original validation data for this product please contact

T: 027-87531629

E: Proteintech-CN@ptglab.com

W: ptgcn.com

This product is exclusively available under Proteintech Group brand and is not available to purchase from any other manufacturer.