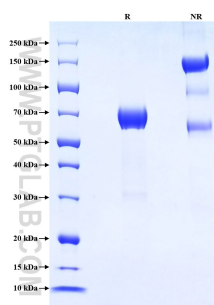


# Recombinant Human KIR2DL3 protein (rFc Tag)

Catalog Number: Eg2699

Basic Information	Species: Human	Purity: >90 %, SDS-PAGE	Tag: rFc Tag
Technical Specifications	<p><b>Purity:</b> &gt;90 %, SDS-PAGE</p> <p><b>Endotoxin Level:</b> &lt;0.1 EU/ µg protein, LAL method</p> <p><b>Source:</b> HEK293-derived Human KIR2DL3 protein His22-His245 (Accession# P43628-1) with a rabbit IgG Fc tag at the C-terminus.</p> <p><b>GeneID:</b> 3804</p> <p><b>Accession:</b> P43628-1</p> <p><b>Predicted Molecular Mass:</b> 50.6 kDa</p> <p><b>SDS-PAGE:</b> 60-75 kDa, reducing (R) conditions</p> <p><b>Formulation:</b> Lyophilized from 0.22 µm filtered solution in PBS, pH 7.4. Normally 5% trehalose and 5% mannitol are added as protectants before lyophilization.</p>		
Biological Activity	Not tested		
Storage and Shipping	<p><b>Storage:</b> It is recommended that the protein be aliquoted for optimal storage. Avoid repeated freeze-thaw cycles.</p> <ul style="list-style-type: none"> <li>• Until expiry date, -20°C to -80°C as lyophilized proteins.</li> <li>• 3 months, -20°C to -80°C under sterile conditions after reconstitution.</li> </ul> <p><b>Shipping:</b> The product is shipped at ambient temperature. Upon receipt, store it immediately at the recommended temperature.</p>		
Reconstitution	Briefly centrifuge the tube before opening. Reconstitute at 0.1-0.5 mg/mL in sterile water.		
Background	<p>Killer cell immunoglobulin-like receptors (KIRs) are a diverse family of inhibitory and activating receptors expressed on NK cells and a subset of T cells. These polymorphic receptors interact with specific motifs on HLA class I molecules, modulate NK cytolytic activity, and are encoded by genes located on chromosome 19q13.4. KIR2DL3, also known as CD158B2 or NKAT2, is an inhibitory receptor that is specific for HLA-C alleles (HLA-Cw1, HLA-Cw3, and HLA-Cw7). It is a 341-amino acid transmembrane glycoprotein consisting of an extracellular region containing two C2-type Ig-like domains, a 19-amino acid hydrophobic transmembrane region, and a long cytoplasmic tail with two immunoreceptor tyrosine-based inhibitory motifs (ITIMs). KIR2DL3 inhibits the cytolytic activity of NK cells thus preventing cell lysis.</p>		
References	<ol style="list-style-type: none"> <li>1. Carlos Vilches. et al. (2002). Annu Rev Immunol. 20:217-251.</li> <li>2. A Bontadini. et al. (2006). J Transl Med. 4:44.</li> <li>3. K Maenaka. et al. (1999). Structure. 7(4):391-398.</li> <li>4. M Vitale. et al. (1995). Proc Natl Acad Sci U S A. 92(8):3536-3540.</li> </ol>		
Synonyms	KIR2DL3, CD158 antigen-like family member B2, CD158b, CD158B2, GL183		

## Selected Validation Data



Purity of Recombinant Human KIR2DL3 was determined by SDS-PAGE. The protein was resolved in an SDS-PAGE in reducing (R) and non-reducing (NR) conditions and stained using Coomassie blue.

For technical support and original validation data for this product please contact

T: 027-87531629

E: [Proteintech-CN@ptglab.com](mailto:Proteintech-CN@ptglab.com)

W: [ptgcn.com](http://ptgcn.com)

This product is exclusively available under Proteintech Group brand and is not available to purchase from any other manufacturer.