

For Research Use Only

Recombinant Mouse MGL1/CD301a protein (rFc Tag) (HPLC verified)



Catalog Number: Eg2698

Basic Information

Species:
Mouse

Purity:
>90 %, SDS-PAGE
>90 %, SEC-HPLC

Tag:
rFc Tag

Technical Specifications

Purity:
>90 %, SDS-PAGE
>90 %, SEC-HPLC

Endotoxin Level:
<0.1 EU/ μ g protein, LAL method

Source:
HEK293-derived Mouse MGL1 protein Gln57-Ser304 (Accession# P49300) with a rabbit IgG Fc tag at the C-terminus.

GeneID:
17312

Accession:
P49300

Predicted Molecular Mass:
54.3 kDa

SDS-PAGE:
50-65 kDa, reducing (R) conditions

Formulation:
Lyophilized from 0.22 μ m filtered solution in PBS, pH 7.4. Normally 5% trehalose and 5% mannitol are added as protectants before lyophilization.

Biological Activity

Not tested

Storage and Shipping

Storage:

It is recommended that the protein be aliquoted for optimal storage. Avoid repeated freeze-thaw cycles.

- Until expiry date, -20°C to -80°C as lyophilized proteins.
- 3 months, -20°C to -80°C under sterile conditions after reconstitution.

Shipping:

The product is shipped at ambient temperature. Upon receipt, store it immediately at the recommended temperature.

Reconstitution

Briefly centrifuge the tube before opening. Reconstitute at 0.1-0.5 mg/mL in sterile water.

Background

Macrophage galactose-type lectin (MGL) is a type II transmembrane glycoprotein belonging to the type II family of C-type lectin receptors (CLR). MGL is expressed on professional antigen presenting cells. In mice, there are two homologs of human MGL, MGL1(CD301a), and MGL2(CD301b). They contain the Gln-Pro-Asp (QPD) sequence in their carbohydrate recognition domain that facilitates galactose or N-acetylgalactosamine (GalNAc) recognition. Murine MGL1 was found to be highly specific for Lewis X and Lewis A structures, whereas mMGL2 recognized N-acetylgalactosamine (GalNAc) and galactose.

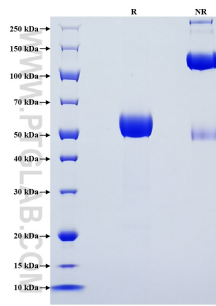
References

- 1.Singh SK, et al. (2009) Mol Immunol. 46(6):1240-9.
- 2.Denda-Nagai K, et al. (2010) J Biol Chem. 18;285(25):19193-204.
- 3.Zizzari IG, et al. (2015) J Immunol Res. 2015:450695.

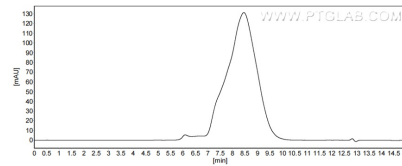
Synonyms

Clec10a, CLEC10A/CD301, C-type lectin domain family 10 member A, Macrophage asialoglycoprotein-binding protein 1, Macrophage galactose/N-acetylgalactosamine-specific lectin

Selected Validation Data



Purity of Recombinant Mouse MGL1 was determined by SDS-PAGE. The protein was resolved in an SDS-PAGE in reducing (R) and non-reducing (NR) conditions and stained using Coomassie blue.



The purity of Mouse MGL1/CD301a was greater than 90% as determined by SEC-HPLC.

For technical support and original validation data for this product please contact

T: 027-87531629

E: Proteintech-CN@ptglab.com

W: ptgcn.com

This product is exclusively available under Proteintech Group brand and is not available to purchase from any other manufacturer.