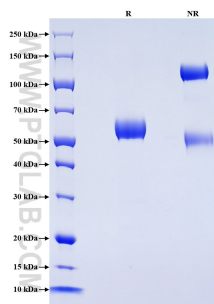


Recombinant Mouse SLAMF7/CD319 protein (rFc Tag)(HPLC verified)

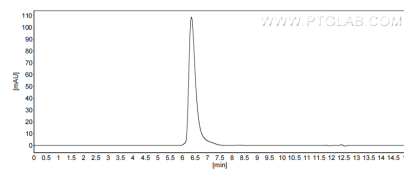
Catalog Number: Eg2672

| | | | |
|--------------------------|---|---|------------------------|
| Basic Information | Species: Mouse | Purity: >90 %, SDS-PAGE >90 %, SEC-HPLC | Tag: rFc Tag |
| Technical Specifications | Purity: >90 %, SDS-PAGE >90 %, SEC-HPLC Endotoxin Level: <0.1 EU/ μg protein, LAL method Source: HEK293-derived Mouse SLAMF7 protein Ser23-Gly224 (Accession# Q8BHK6-1) with a rabbit IgG Fc tag at the C-terminus. GeneID: 75345 Accession: Q8BHK6-1 Predicted Molecular Mass: 48.3 kDa SDS-PAGE: 50-65 kDa, reducing (R) conditions Formulation: Lyophilized from 0.22 μm filtered solution in PBS, pH 7.4. Normally 5% trehalose and 5% mannitol are added as protectants before lyophilization. | | |
| Biological Activity | Not tested | | |
| Storage and Shipping | Storage: It is recommended that the protein be aliquoted for optimal storage. Avoid repeated freeze-thaw cycles. <ul style="list-style-type: none"> • Until expiry date, -20°C to -80°C as lyophilized proteins. • 3 months, -20°C to -80°C under sterile conditions after reconstitution. Shipping: The product is shipped at ambient temperature. Upon receipt, store it immediately at the recommended temperature. | | |
| Reconstitution | Briefly centrifuge the tube before opening. Reconstitute at 0.1-0.5 mg/mL in sterile water. | | |
| Background | Signaling lymphocyte activation molecule (SLAM) family receptors is a group of type I transmembrane receptors belonging to the immunoglobulin superfamily. The SLAM family contains nine members that contain an extracellular segment comprising two or four Ig-like domains (V-like variable and C2-like constant), a transmembrane region and a cytoplasmic tail. They are involved in various physiological and pathological processes, including the regulation of immunological responses and the route of viral entry. SLAMF7, also known as CS1, CRACC or CD319, is expressed on NK cells, CD8+ T lymphocytes, B lymphocytes, and mature dendritic cells. It exerts both activating and inhibitory effects depending on the expression status of SAP or EAT-2. SLAMF7 is overexpressed in multiple myeloma and makes it a target for immunotherapy. | | |
| References | 1.Farhangnia P, et al. (2023) Front Immunol. 11;14:1174138. 2.Fouquet G, et al. (2018) Oncotarget. 26;9(22):16248-16262. 3.Malaer JD, et al. (2017) Am J Cancer Res. 1;7(8):1637-1641. | | |
| Synonyms | CD319, Leukocyte cell-surface antigen, Novel Ly9, SLAM family member 7, Slamf7 | | |

Selected Validation Data



Purity of Recombinant Mouse SLAMF7 was determined by SDS-PAGE. The protein was resolved in an SDS-PAGE in reducing (R) and non-reducing (NR) conditions and stained using Coomassie blue.



The purity of Mouse SLAMF7/CD319 was greater than 90% as determined by SEC-HPLC.

For technical support and original validation data for this product please contact

T: 027-87531629

E: Proteintech-CN@ptglab.com

W: ptgcn.com

This product is exclusively available under Proteintech Group brand and is not available to purchase from any other manufacturer.