

For Research Use Only

# Recombinant Human LILRA3 protein (rFc Tag)



Catalog Number: Eg2670

## Basic Information

**Species:**  
Human

**Purity:**  
>90 %, SDS-PAGE

**Tag:**  
rFc Tag

## Technical Specifications

**Purity:**

>90 %, SDS-PAGE

**Endotoxin Level:**

<0.1 EU/  $\mu$ g protein, LAL method

**Source:**

HEK293-derived Human LILRA3 protein Gly24-Glu439 (Accession# Q8N6C8-1) with a rabbit IgG Fc tag at the C-terminus.

**GeneID:**

11026

**Accession:**

Q8N6C8-1

**Predicted Molecular Mass:**

71.0 kDa

**SDS-PAGE:**

70-90 kDa, reducing (R) conditions

**Formulation:**

Lyophilized from 0.22  $\mu$ m filtered solution in PBS, pH 7.4. Normally 5% trehalose and 5% mannitol are added as protectants before lyophilization.

## Biological Activity

Not tested

## Storage and Shipping

**Storage:**

It is recommended that the protein be aliquoted for optimal storage. Avoid repeated freeze-thaw cycles.

- Until expiry date, -20°C to -80°C as lyophilized proteins.
- 3 months, -20°C to -80°C under sterile conditions after reconstitution.

**Shipping:**

The product is shipped at ambient temperature. Upon receipt, store it immediately at the recommended temperature.

## Reconstitution

Briefly centrifuge the tube before opening. Reconstitute at 0.1-0.5 mg/mL in sterile water.

## Background

LILRA3 (Leukocyte Immunoglobulin Like Receptor A3) is a member of the human leukocyte immunoglobulin-like receptor family and is the only soluble receptor in this group, also known as CD85e, ILT6, or LIR-4. LILRA3 is produced as a soluble molecule by monocytes and macrophages and exhibits the presence or absence of a 6.7 kb variant between individuals. LILRA3 is produced by monocytes and macrophages as a soluble molecule, and exhibits the presence or absence of a 6.7 kb variant between individuals. The 6.7 kb deletion consists of the first six of a total of seven exons and removes all four Ig-like structural domains, resulting in a truncated protein. LILRA3 has been implicated as a novel susceptibility factor for systemic lupus erythematosus (SLE) and primary desiccation syndrome (pSS). Variants of the LILRA3 gene have been associated with increased susceptibility to autoimmune diseases, including prophylactic lupus. Increased susceptibility, including primary Sjogren's syndrome (SS) and non-Hodgkin's B-cell lymphoma (B-NHL).

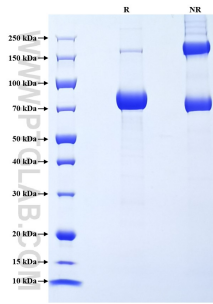
## References

1. Wu X, et al. (2021). Iran J Basic Med Sci. 24(2):196-202.
2. Liu H, et al. (2022). Rheumatology (Oxford). 8;61(12):4962-4974.
3. Ryu M, et al. (2011). PLoS One. 6(4):e19245.
4. Wang H, et al. (2019). Front Genet. 10:869.

## Synonyms

CD85 antigen-like family member E, CD85e, ILT-6, Immunoglobulin-like transcript 6, Leukocyte immunoglobulin-like receptor 4

## Selected Validation Data



Purity of Recombinant Human LILRA3 was determined by SDS-PAGE. The protein was resolved in an SDS-PAGE in reducing (R) and non-reducing (NR) conditions and stained using Coomassie blue.

For technical support and original validation data for this product please contact

T: 027-87531629

E: [Proteintech-CN@ptglab.com](mailto:Proteintech-CN@ptglab.com)

W: [ptgcn.com](http://ptgcn.com)

This product is exclusively available under Proteintech Group brand and is not available to purchase from any other manufacturer.