

For Research Use Only

Recombinant Human CRLF2 protein (rFc Tag)



Catalog Number: Eg2626

Basic Information

Species:
Human

Purity:
>90 %, SDS-PAGE

Tag:
rFc Tag

Technical Specifications

Purity:

>90 %, SDS-PAGE

Endotoxin Level:

<0.1 EU/ µg protein, LAL method

Source:

HEK293-derived Human CRLF2 protein Gly25-Lys231 (Accession# Q9HC73) with a rabbit IgG Fc tag at the C-terminus.

GeneID:

64109

Accession:

Q9HC73

Predicted Molecular Mass:

50.0 kDa

SDS-PAGE:

55-70 kDa, reducing (R) conditions

Formulation:

Lyophilized from 0.22 µm filtered solution in PBS, pH 7.4. Normally 5% trehalose and 5% mannitol are added as protectants before lyophilization.

Biological Activity

Not tested

Storage and Shipping

Storage:

It is recommended that the protein be aliquoted for optimal storage. Avoid repeated freeze-thaw cycles.

- Until expiry date, -20°C to -80°C as lyophilized proteins.
- 3 months, -20°C to -80°C under sterile conditions after reconstitution.

Shipping:

The product is shipped at ambient temperature. Upon receipt, store it immediately at the recommended temperature.

Reconstitution

Briefly centrifuge the tube before opening. Reconstitute at 0.1-0.5 mg/mL in sterile water.

Background

Cytokine receptor-like factor 2 (CRLF2), also known as the thymic stromal derived lymphopoietin receptor (TSLPR), which in combination with the interleukin 7 receptor α chain (IL-7R) forms the receptor for thymic stromal lymphopoietin. CRLF2 is a type I cytokine receptor. CRLF2 rearrangements occur either as a translocation to the immunoglobulin heavy-chain enhancer region (IGH-CRLF2) or by a deletion of upstream PAR1 that leads to joining of CRLF2 to adjacent P2RY8. CRLF2 is expressed in heart, skeletal muscle, kidney and adult and fetal liver and is primarily expressed in dendrites and monocytes.

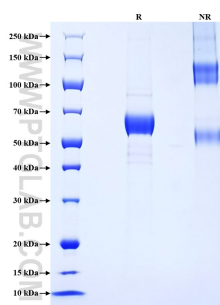
References

1. Roll JD, et al. (2010) Cancer Res. 70(19):7347-7352.
2. Jain S, et al. (2020) Arch Pathol Lab Med. 144(2):150-155.
3. Yadav V, et al. (2021) Clin Lymphoma Myeloma Leuk. 21(1):e57-e65.

Synonyms

CRLF2, CRL2, CRLF2Y, IL XR, ILXR

Selected Validation Data



Purity of Recombinant Human CRLF2 was determined by SDS-PAGE. The protein was resolved in an SDS-PAGE in reducing (R) and non-reducing (NR) conditions and stained using Coomassie blue.

For technical support and original validation data for this product please contact

T: 027-87531629

E: Proteintech-CN@ptglab.com

W: ptgcn.com

This product is exclusively available under Proteintech Group brand and is not available to purchase from any other manufacturer.