

For Research Use Only

# Recombinant Human BCAM protein (rFc Tag) (HPLC verified)



Catalog Number: Eg2567

## Basic Information

**Species:**  
Human

**Purity:**  
>90 %, SDS-PAGE<br>>90 %, SEC-HPLC

**Tag:**  
rFc Tag

## Technical Specifications

**Purity:**  
>90 %, SDS-PAGE<br>>90 %, SEC-HPLC

**Endotoxin Level:**  
<0.1 EU/  $\mu$ g protein, LAL method

**Source:**  
HEK293-derived Human BCAM protein Glu32-Ala547 (Accession# P50895) with a rabbit IgG Fc tag at the C-terminus.

**GeneID:**  
4059

**Accession:**  
P50895

**Predicted Molecular Mass:**  
82.5 kDa

**SDS-PAGE:**  
85-110 kDa, reducing (R) conditions

**Formulation:**  
Lyophilized from 0.22  $\mu$ m filtered solution in PBS, pH 7.4. Normally 5% trehalose and 5% mannitol are added as protectants before lyophilization.

## Biological Activity

Not tested

## Storage and Shipping

### Storage:

It is recommended that the protein be aliquoted for optimal storage. Avoid repeated freeze-thaw cycles.

- Until expiry date, -20°C to -80°C as lyophilized proteins.
- 3 months, -20°C to -80°C under sterile conditions after reconstitution.

### Shipping:

The product is shipped at ambient temperature. Upon receipt, store it immediately at the recommended temperature.

## Reconstitution

Briefly centrifuge the tube before opening. Reconstitute at 0.1-0.5 mg/mL in sterile water.

## Background

Basal cell adhesion molecule (Lu/BCAM) is a membrane-bound glycoprotein of the immunoglobulin superfamily (IgSF), functioning as a receptor for the extracellular matrix protein, laminin. BCAM (Lutheran/basal cell-adhesion molecule, a glycoprotein) belongs to the immunoglobulin superfamily which contains both Lu blood group and BCAM tumor-associated antigens. Proteomics analysis suggests that BCAM might be a potential biomarker for pancreatic cancer. BCAM, involved in cell adhesion and migration, can also promote tumor metastasis and has been elucidated to play a functional role in the metastasis of thyroid cancer and gastric cancer.

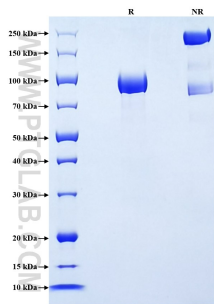
## References

- 1.Yu KH. et al. (2009) J Proteome Res. 8(3):1565-76.
- 2.Bernemann TM. et al. (2000) J Cutan Pathol. 27(3):108-11.
- 3.Zhao J. et al. (2022) Clin Epigenetics. 14(1):99.

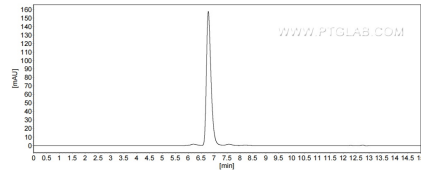
## Synonyms

Auberger B antigen, Basal cell adhesion molecule, B-CAM cell surface glycoprotein, CD239, F8/G253 antigen

## Selected Validation Data



Purity of Recombinant Human BCAM was determined by SDS-PAGE. The protein was resolved in an SDS-PAGE in reducing (R) and non-reducing (NR) conditions and stained using Coomassie blue.



The purity of Human BCAM was greater than 90% as determined by SEC-HPLC.

For technical support and original validation data for this product please contact

T: 027-87531629

E: [Proteintech-CN@ptglab.com](mailto:Proteintech-CN@ptglab.com)

W: [ptgcn.com](http://ptgcn.com)

This product is exclusively available under Proteintech Group brand and is not available to purchase from any other manufacturer.