

For Research Use Only

# Recombinant Human CXCL1 protein (rFc Tag) (HPLC verified)



Catalog Number: Eg2565

## Basic Information

**Species:**  
Human

**Purity:**  
>90 %, SDS-PAGE<br>>90 %, SEC-HPLC

**Tag:**  
rFc Tag

## Technical Specifications

**Purity:**  
>90 %, SDS-PAGE<br>>90 %, SEC-HPLC

**Endotoxin Level:**  
<0.1 EU/  $\mu$ g protein, LAL method

**Source:**  
HEK293-derived Human CXCL1 protein Ala35-Asn107 (Accession# P09341) with a rabbit IgG Fc tag at the C-terminus.

**GeneID:**  
2919

**Accession:**  
P09341

**Predicted Molecular Mass:**  
34.1 kDa

**SDS-PAGE:**  
34-42 kDa, reducing (R) conditions

**Formulation:**  
Lyophilized from 0.22  $\mu$ m filtered solution in PBS, pH 7.4. Normally 5% trehalose and 5% mannitol are added as protectants before lyophilization.

## Biological Activity

Not tested

## Storage and Shipping

### Storage:

It is recommended that the protein be aliquoted for optimal storage. Avoid repeated freeze-thaw cycles.

- Until expiry date, -20°C to -80°C as lyophilized proteins.
- 3 months, -20°C to -80°C under sterile conditions after reconstitution.

### Shipping:

The product is shipped at ambient temperature. Upon receipt, store it immediately at the recommended temperature.

## Reconstitution

Briefly centrifuge the tube before opening. Reconstitute at 0.1-0.5 mg/mL in sterile water.

## Background

CXCL1 is a member of CXC family and also known as keratinocyte-derived chemokines (KC) or growth-related oncogene (GRO). CXCL1 is expressed by macrophages, neutrophils and epithelial cells. CXCL1 binding specifically to the CXC chemokine receptor CXCR2, is involved in fibrogenesis and angiogenesis. This protein also plays a role in inflammation and as a chemoattractant for neutrophils. CXCL1 is upregulated in some types of human cancer, including colorectal, bladder, breast, prostate and skin cancers.

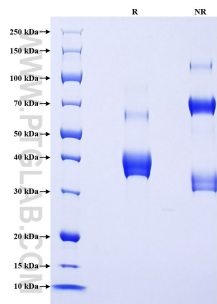
## References

1. D. Wang et al. (2000). *Oncogene*.19:4647-4659.
2. Verbeke H. et al. (2011). *Cytokine Growth Factor Rev.*22:345-358.
3. Miyake M. et al. (2014). *Pathol Res Pract.*210:74-75.
4. Dhawan P. et al. (2002). *JLeukoc Biol.*72:9-18.

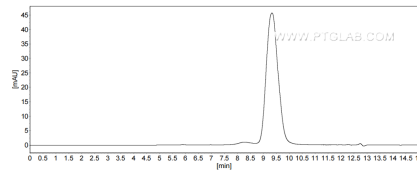
## Synonyms

CXC motif chemokine 1, C-X-C motif chemokine 1, CXCL 1, GRO-alpha(4-73), GRO-alpha(5-73)

## Selected Validation Data



Purity of Recombinant Human CXCL1 was determined by SDS-PAGE. The protein was resolved in an SDS-PAGE in reducing (R) and non-reducing (NR) conditions and stained using Coomassie blue.



The purity of Human CXCL1 was greater than 90% as determined by SEC-HPLC.

For technical support and original validation data for this product please contact

T: 027-87531629

E: [Proteintech-CN@ptglab.com](mailto:Proteintech-CN@ptglab.com)

W: [ptgcn.com](http://ptgcn.com)

This product is exclusively available under Proteintech Group brand and is not available to purchase from any other manufacturer.