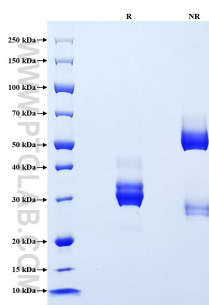


Recombinant Human CXCL10/IP-10 protein (rFc Tag)

Catalog Number: Eg2489

Basic Information	Species: Human	Purity: >90 %, SDS-PAGE	Tag: rFc Tag
Technical Specifications	<p>Purity: >90 %, SDS-PAGE</p> <p>Endotoxin Level: <0.1 EU/ µg protein, LAL method</p> <p>Source: HEK293-derived Human CXCL10 protein Val22-Pro98 (Accession# P02778) with a rabbit IgG Fc tag at the C-terminus.</p> <p>GeneID: 3627</p> <p>Accession: P02778</p> <p>Predicted Molecular Mass: 34.9 kDa</p> <p>SDS-PAGE: 28-35 kDa, reducing (R) conditions</p> <p>Formulation: Lyophilized from 0.22 µm filtered solution in PBS, pH 7.4. Normally 5% trehalose and 5% mannitol are added as protectants before lyophilization.</p>		
Biological Activity	Not tested		
Storage and Shipping	<p>Storage: It is recommended that the protein be aliquoted for optimal storage. Avoid repeated freeze-thaw cycles.</p> <ul style="list-style-type: none"> • Until expiry date, -20°C to -80°C as lyophilized proteins. • 3 months, -20°C to -80°C under sterile conditions after reconstitution. <p>Shipping: The product is shipped at ambient temperature. Upon receipt, store it immediately at the recommended temperature.</p>		
Reconstitution	Briefly centrifuge the tube before opening. Reconstitute at 0.1-0.5 mg/mL in sterile water.		
Background	<p>CXCL10 (also known as IP-10) is a member of the CXC chemokine family which binds to the CXCR3 receptor to exert its biological effects. CXCL10 is a 12-kDa protein and constitutes two internal disulfide cross bridges. The predicted signal peptidase cleavage generates a 10-kDa secreted polypeptide with four conserved cysteine residues in the N-terminal. The CXCL10 gene localizes on chromosome 4 at band q21, a locus associated with an acute monocytic/B-lymphocyte lineage leukemia exhibiting translocation of t(4;11)(q21;q23). CXCL10 mediates leukocyte trafficking, adaptive immunity, inflammation, haematopoiesis and angiogenesis. Under proinflammatory conditions CXCL10 is secreted from a variety of cells, such as leukocytes, activated neutrophils, eosinophils, monocytes, epithelial cells, endothelial cells, stromal cells (fibroblasts) and keratinocytes in response to IFN-γ.</p>		
References	<ol style="list-style-type: none"> 1. Liu M. et al. (2011). Oncol Lett. 2(4):583-589. 2. Walser TC. et al. (2006). Cancer Res. 66(15):7701-7. 3. Luster AD. et al. (1987). J Exp Med. 166(4):1084-97. 4. Lo BK. et al. (2010). Am J Pathol. 176(5):2435-46. 5. Groom JR. Et al. (2011). Immunol Cell Biol. 89(2):207-15. 		
Synonyms	CXCL10, CXCL10/IP10, IP10, 10 kDa interferon gamma-induced protein, C X C motif chemokine 10		

Selected Validation Data



Purity of Recombinant Human CXCL10 was determined by SDS-PAGE. The protein was resolved in an SDS-PAGE in reducing (R) and non-reducing (NR) conditions and stained using Coomassie blue.

For technical support and original validation data for this product please contact

T: 027-87531629

E: Proteintech-CN@ptglab.com

W: ptgcn.com

This product is exclusively available under Proteintech Group brand and is not available to purchase from any other manufacturer.