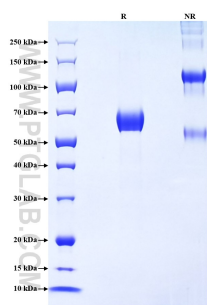


# Recombinant Human EMR2 protein (rFc Tag)

Catalog Number: Eg2479

Basic Information	Species: Human	Purity: >90 %, SDS-PAGE	Tag: C-rFc
Technical Specifications	<p><b>Purity:</b> &gt;90 %, SDS-PAGE</p> <p><b>Endotoxin Level:</b> &lt;0.1 EU/ µg protein, LAL method</p> <p><b>Source:</b> HEK293-derived Human EMR2 protein Gln24-Glu260 (Accession# Q9UHX3-1) with a rabbit IgG Fc tag at the C-terminus.</p> <p><b>GeneID:</b> 30817</p> <p><b>Accession:</b> Q9UHX3-1</p> <p><b>Predicted Molecular Mass:</b> 51.9 kDa</p> <p><b>SDS-PAGE:</b> 60-70 kDa, reducing (R) condition</p> <p><b>Formulation:</b> Lyophilized from 0.22 µm filtered solution in PBS, pH 7.4. Normally 5% trehalose and 5% mannitol are added as protectants before lyophilization.</p>		
Biological Activity	Not tested		
Storage and Shipping	<p><b>Storage:</b> It is recommended that the protein be aliquoted for optimal storage. Avoid repeated freeze-thaw cycles.</p> <ul style="list-style-type: none"><li>• Until expiry date, -20°C to -80°C as lyophilized proteins.</li><li>• 3 months, -20°C to -80°C under sterile conditions after reconstitution.</li></ul> <p><b>Shipping:</b> The product is shipped at ambient temperature. Upon receipt, store it immediately at the recommended temperature.</p>		
Reconstitution	Briefly centrifuge the tube before opening. Reconstitute at 0.1-0.5 mg/mL in sterile water.		
Background	<p>EMR2 (Epidermal Growth Factor-like module-containing Mucin-like Hormone Receptor 2), also known as ADGRE2, is a member of the adhesion-GPCR family that contains extracellular EGF-like domains. EMR2 contains a total of five tandem EGF-like domains and expresses similar protein isoforms consisting of various numbers of EGF-like domains as a result of alternative RNA splicing. EMR2 is restricted to myeloid cells including monocytes, macrophages, dendritic cells and granulocytes<sup>28</sup> and its expression is highly regulated during monocyte/macrophage differentiation. The ligation of EMR2 could increase neutrophil adhesion, migration and anti-microbial mediator production and could enhance the systemic inflammation.</p>		
References	<ol style="list-style-type: none"><li>1. H H Lin, et al. (2000) Genomics. 67(2):188-200.</li><li>2. Nisha Bhudia, et al. (2020) Sci Rep. 10(1):1004.</li><li>3. Chien-Hao Huang, et al. (2016) Sci Rep. 6:38250.</li></ol>		
Synonyms	EMR2, ADGRE2, Adhesion G protein-coupled receptor E2, CD312, EGF like module receptor 2		

## Selected Validation Data



Purity of Recombinant Human EMR2 was determined by SDS-PAGE. The protein was resolved in an SDS-PAGE in reducing (R) and non-reducing (NR) conditions and stained using Coomassie blue.

For technical support and original validation data for this product please contact

T: 027-87531629

E: [Proteintech-CN@ptglab.com](mailto:Proteintech-CN@ptglab.com)

W: [ptgcn.com](http://ptgcn.com)

This product is exclusively available under Proteintech Group brand and is not available to purchase from any other manufacturer.