

For Research Use Only

Recombinant Human C-Reactive Protein/CRP protein (rFc Tag)



Catalog Number: Eg2448

Basic Information

Species:
Human

Purity:
>90 %, SDS-PAGE

Tag:
rFc Tag

Technical Specifications

Purity:
>90 %, SDS-PAGE

Endotoxin Level:
<0.1 EU/ μ g protein, LAL method

Source:
HEK293-derived Human C-Reactive Protein protein Gln19-Pro224 (Accession# P02741-1) with a rabbit IgG Fc tag at the C-terminus.

GeneID:
1401

Accession:
P02741-1

Predicted Molecular Mass:
49.3 kDa

SDS-PAGE:
47-53 kDa, reducing (R) conditions

Formulation:
Lyophilized from 0.22 μ m filtered solution in PBS, pH 7.4. Normally 5% trehalose and 5% mannitol are added as protectants before lyophilization.

Biological Activity

Not tested

Storage and Shipping

Storage:

It is recommended that the protein be aliquoted for optimal storage. Avoid repeated freeze-thaw cycles.

- Until expiry date, -20°C to -80°C as lyophilized proteins.
- 3 months, -20°C to -80°C under sterile conditions after reconstitution.

Shipping:

The product is shipped at ambient temperature. Upon receipt, store it immediately at the recommended temperature.

Reconstitution

Briefly centrifuge the tube before opening. Reconstitute at 0.1-0.5 mg/mL in sterile water.

Background

C-reactive protein (CRP) is an acute-phase serum protein synthesized by the liver in response to interleukin-6 (IL-6) during inflammation. The name of CRP derives from its ability to react with the C polysaccharide of *Streptococcus pneumoniae*. CRP is an annular, pentameric protein that belongs to the pentraxin family of proteins. CRP displays several functions associated with host defense: it promotes agglutination, bacterial capsular swelling, phagocytosis and complement fixation through its calcium-dependent binding to phosphocholine. It is used mainly as a marker of inflammation.

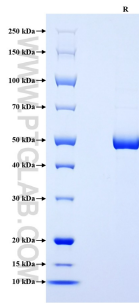
References

1. Rizo-Téllez, Salma A et al. *Frontiers in immunology* vol. 14 1237729. 26 Jul. 2023.
2. Black, Steven et al. *The Journal of biological chemistry* vol. 279,47 (2004): 48487-90.
3. Zhou, Hai-Hong et al. *Frontiers in immunology* vol. 15 1425168. 14 Jun. 2024.

Synonyms

C-Reactive Protein/CRP, CRP, C reactive protein, C-reactive protein(1-205), PTX1

Selected Validation Data



Purity of Recombinant Human C-Reactive Protein was determined by SDS-PAGE. The protein was resolved in an SDS-PAGE in reducing (R) conditions and stained using Coomassie blue.

For technical support and original validation data for this product please contact

T: 027-87531629

E: Proteintech-CN@ptglab.com

W: ptgcn.com

This product is exclusively available under Proteintech Group brand and is not available to purchase from any other manufacturer.