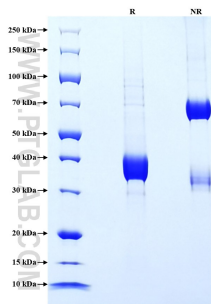


# Recombinant Human CCL20/MIP-3 alpha protein (rFc Tag)

Catalog Number: Eg2398

Basic Information	Species: Human	Purity: >90 %, SDS-PAGE	Tag: rFc Tag
Technical Specifications	<p><b>Purity:</b> &gt;90 %, SDS-PAGE</p> <p><b>Endotoxin Level:</b> &lt;0.1 EU/ µg protein, LAL method</p> <p><b>Source:</b> HEK293-derived Human CCL20 protein Ala27-Met96 (Accession# P78556-1) with a rabbit IgG Fc tag at the N-terminus.</p> <p><b>GeneID:</b> 6364</p> <p><b>Accession:</b> P78556-1</p> <p><b>Predicted Molecular Mass:</b> 35.2 kDa</p> <p><b>SDS-PAGE:</b> 32-40 kDa, reducing (R) conditions</p> <p><b>Formulation:</b> Lyophilized from 0.22 µm filtered solution in PBS, pH 7.4. Normally 5% trehalose and 5% mannitol are added as protectants before lyophilization.</p>		
Biological Activity	Not tested		
Storage and Shipping	<p><b>Storage:</b> It is recommended that the protein be aliquoted for optimal storage. Avoid repeated freeze-thaw cycles.</p> <ul style="list-style-type: none"> <li>• Until expiry date, -20°C to -80°C as lyophilized proteins.</li> <li>• 3 months, -20°C to -80°C under sterile conditions after reconstitution.</li> </ul> <p><b>Shipping:</b> The product is shipped at ambient temperature. Upon receipt, store it immediately at the recommended temperature.</p>		
Reconstitution	Briefly centrifuge the tube before opening. Reconstitute at 0.1-0.5 mg/mL in sterile water.		
Background	<p>CCL20, also known as MIP-3 alpha, is a chemokine expressed mainly in the lymphatic tissue, lung and liver produced by cells related with inflammation and autoimmune response such as endothelial cells, neutrophils, natural killer (NK), Th17 cells and B cells among others. CCL20 contributes to inflammatory cell recruitment. CCL20 selectively signals through its receptor CCR6. The ligand-receptor pair CCL20/CCR6 is responsible for the chemoattraction of immature dendritic cells, effector/memory T cells and B cells, and also serves a role in the skin and mucosal surfaces under homeostatic and inflammatory conditions, as well as in pathological processes, such as those associated with cancer and rheumatoid arthritis.</p>		
References	<ol style="list-style-type: none"> <li>1. Schutysen E. et al. (2003). Cytokine Growth Factor Rev. 14(5):409-26.</li> <li>2. Hromas R. et al. (1997). Blood. 89(9):3315-22.</li> <li>3. Shimizu Y. et al. (2001). Hepatology. 34(2):311-9.</li> <li>4. Lee AY. et al.(2013). Front Immunol. 4:194.</li> </ol>		
Synonyms	CCL20, MIP-3 Alpha, MIP-3 α, Beta-chemokine exodus-1, C C motif chemokine 20		

## Selected Validation Data



Purity of Recombinant Human CCL20 was determined by SDS-PAGE. The protein was resolved in an SDS-PAGE in reducing (R) and non-reducing (NR) conditions and stained using Coomassie blue.

For technical support and original validation data for this product please contact

T: 027-87531629

E: [Proteintech-CN@ptglab.com](mailto:Proteintech-CN@ptglab.com)

W: [ptgcn.com](http://ptgcn.com)

This product is exclusively available under Proteintech Group brand and is not available to purchase from any other manufacturer.