

For Research Use Only

# Recombinant Human Glycophorin A protein (rFc Tag)



Catalog Number: Eg2336

## Basic Information

**Species:**  
Human

**Purity:**  
>90 %, SDS-PAGE

**Tag:**  
rFc Tag

## Technical Specifications

**Purity:**

>90 %, SDS-PAGE

**Endotoxin Level:**

<0.1 EU/ µg protein, LAL method

**Source:**

HEK293-derived Human Glycophorin A protein Ser20-Glu91 (Accession# ADU25344.1) with a rabbit IgG Fc tag at the C-terminus.

**GenID:**

2993

**Accession:**

ADU25344.1

**Predicted Molecular Mass:**

34.2 kDa

**SDS-PAGE:**

38-65 kDa, reducing (R) conditions

**Formulation:**

Lyophilized from 0.22 µm filtered solution in PBS, pH 7.4. Normally 5% trehalose and 5% mannitol are added as protectants before lyophilization.

## Biological Activity

Not tested

## Storage and Shipping

**Storage:**

It is recommended that the protein be aliquoted for optimal storage. Avoid repeated freeze-thaw cycles.

- Until expiry date, -20°C to -80°C as lyophilized proteins.
- 3 months, -20°C to -80°C under sterile conditions after reconstitution.

**Shipping:**

The product is shipped at ambient temperature. Upon receipt, store it immediately at the recommended temperature.

## Reconstitution

Briefly centrifuge the tube before opening. Reconstitute at 0.1-0.5 mg/mL in sterile water.

## Background

Glycophorin A (GYPA) is a type I single-span membrane protein made with an amino-terminal signal sequence that is cotranslationally cleaved during biosynthesis in the ER, and then traffics to the red cell surface. Glycophorin A carries the M and N antigens of the MNS blood group system. The MN specificity is in the NH<sub>2</sub>-terminal region, and these antigens require the NH<sub>2</sub>-terminal O-glycosidic oligosaccharides for activity.

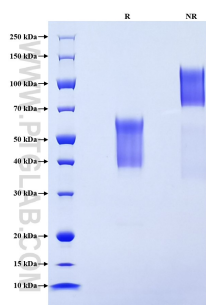
## References

1. Cordat E. et al. (2014). Curr Top Membr. 73:1-67.
2. Toivanen A. et al. (2008). Biochim Biophys Acta. 1780(3):456-466.

## Synonyms

CD235a, Glycophorin-A, GPA, GP<sub>E</sub>erik, GpMilli

## Selected Validation Data



Purity of Recombinant Human Glycophorin A was determined by SDS-PAGE. The protein was resolved in an SDS-PAGE in reducing (R) and non-reducing (NR) conditions and stained using Coomassie blue.

For technical support and original validation data for this product please contact

T: 027-87531629

E: [Proteintech-CN@ptglab.com](mailto:Proteintech-CN@ptglab.com)

W: [ptgcn.com](http://ptgcn.com)

This product is exclusively available under Proteintech Group brand and is not available to purchase from any other manufacturer.