

For Research Use Only

Recombinant Human ACE protein (rFc Tag)



Catalog Number: Eg2298

Basic Information

Species:
Human

Purity:
>90 %, SDS-PAGE

Tag:
rFc Tag

Technical Specifications

Purity:

>90 %, SDS-PAGE

Endotoxin Level:

<0.1 EU/ µg protein, LAL method

Source:

HEK293-derived Human ACE protein Leu30-Arg1256 (Accession# P12821-1) with a rabbit IgG Fc tag at the C-terminus.

GeneID:

1636

Accession:

P12821-1

Predicted Molecular Mass:

167.5 kDa

SDS-PAGE:

140-200 kDa, reducing (R) conditions

Formulation:

Lyophilized from 0.22 µm filtered solution in PBS, pH 7.4. Normally 5% trehalose and 5% mannitol are added as protectants before lyophilization.

Biological Activity

Not tested

Storage and Shipping

Storage:

It is recommended that the protein be aliquoted for optimal storage. Avoid repeated freeze-thaw cycles.

- Until expiry date, -20°C to -80°C as lyophilized proteins.
- 3 months, -20°C to -80°C under sterile conditions after reconstitution.

Shipping:

The product is shipped at ambient temperature. Upon receipt, store it immediately at the recommended temperature.

Reconstitution

Briefly centrifuge the tube before opening. Reconstitute at 0.1-0.5 mg/mL in sterile water.

Background

ACE(Angiotensin-converting enzyme) is also named as DCP, DCP1 and belongs to the peptidase M2 family. It is involved in catalyzing the conversion of angiotensin I into a physiologically active peptide angiotensin II. ACE also has a glycosidase activity which releases GPI-anchored proteins from the membrane by cleaving the mannose linkage in the GPI moiety. It has 4 isoforms produced by alternative splicing. The full length protein has 15 glycosylation sites and it can show a molecular weight of 170 kDa(PMID:16804085).

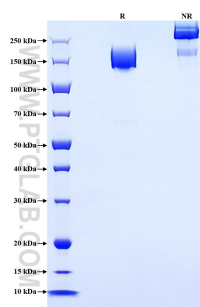
References

- 1.Bernstein,K.E.et al.(2012) Pharmacol.Rev.65,1-46.
- 2.Gribouval,O.et al.(2011) Hum.Mut.33,316-326.
- 3.Danilov,S.M.et al.(2010) J.Proteome Res.9,5782-5793.
- 4.Danilov,S.M.et al.(2018) Mol.Genet.Metab.123,501-510.
- 5.Kozuch,A.J.et al.(2023) Biomedicines.11,953.

Synonyms

ACE1, Angiotensin converting enzyme, Angiotensin-converting enzyme, Angiotensin-converting enzyme, soluble form, DCP

Selected Validation Data



Purity of Recombinant Human ACE was determined by SDS-PAGE. The protein was resolved in an SDS-PAGE in reducing (R) and non-reducing (NR) conditions and stained using Coomassie blue.

For technical support and original validation data for this product please contact

T: 027-87531629

E: Proteintech-CN@ptglab.com

W: ptgcn.com

This product is exclusively available under Proteintech Group brand and is not available to purchase from any other manufacturer.