

For Research Use Only

Recombinant Mouse CCL22 protein (rFc Tag) (HPLC verified)



Catalog Number: Eg2241

Basic Information

Species:
Mouse

Purity:
>90 %, SDS-PAGE
>90 %, SEC-HPLC

Tag:
rFc Tag

Technical Specifications

Purity:
>90 %, SDS-PAGE
>90 %, SEC-HPLC

Endotoxin Level:
<0.1 EU/ μ g protein, LAL method

Source:
HEK293-derived Mouse CCL22 protein Gly25-Ser92 (Accession# O88430) with a rabbit IgG Fc tag at the N-terminus.

GeneID:
20299

Accession:
O88430

Predicted Molecular Mass:
35.0 kDa

SDS-PAGE:
35-43 kDa, reducing (R) conditions

Formulation:
Lyophilized from 0.22 μ m filtered solution in PBS, pH 7.4. Normally 5% trehalose and 5% mannitol are added as protectants before lyophilization.

Biological Activity

Not tested

Storage and Shipping

Storage:

It is recommended that the protein be aliquoted for optimal storage. Avoid repeated freeze-thaw cycles.

- Until expiry date, -20°C to -80°C as lyophilized proteins.
- 3 months, -20°C to -80°C under sterile conditions after reconstitution.

Shipping:

The product is shipped at ambient temperature. Upon receipt, store it immediately at the recommended temperature.

Reconstitution

Briefly centrifuge the tube before opening. Reconstitute at 0.1-0.5 mg/mL in sterile water.

Background

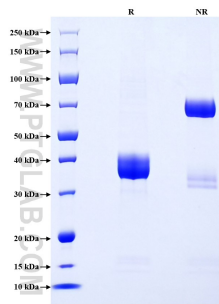
The C-C motif chemokine ligand 22 (CCL22), also known as MDC, belongs to the group of chemokines, that are both constitutively expressed under homeostatic conditions and inducible upon inflammation. CCL22 is a secreted protein that exerts chemotactic activity for monocytes, dendritic cells, natural killer cells, and for chronically activated T lymphocytes. CCL22 is induced by LPS, IL-4, and IL-13 and in T cells by TCR stimulation.

References

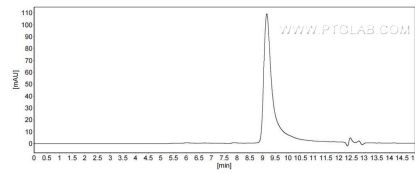
1. A Mantovani. et al. (2000) J Leukoc Biol. 68(3):400-4.
2. M Vulcan. et al. (2001) Eur J Immunol. 31(3):812-22.
3. Stefanie Scheu, et al. (2017) Int J Mol Sci. 18(11):2306
4. Röhrle N. et al. (2020) Adv Exp Med Biol. 1231:79-96.

Synonyms

Selected Validation Data



Purity of Recombinant Mouse CCL22 was determined by SDS-PAGE. The protein was resolved in an SDS-PAGE in reducing (R) and non-reducing (NR) conditions and stained using Coomassie blue.



The purity of Mouse CCL22 was greater than 90% as determined by SEC-HPLC.

For technical support and original validation data for this product please contact

T: 027-87531629

E: Proteintech-CN@ptglab.com

W: ptgcn.com

This product is exclusively available under Proteintech Group brand and is not available to purchase from any other manufacturer.