

Recombinant Human CTRL protein (rFc Tag)

Catalog Number: Eg2214

Basic Information

Species:
Human**Purity:**
>90 %, SDS-PAGE**Tag:**
rFc Tag

Technical Specifications

Purity:

>90 %, SDS-PAGE

Endotoxin Level:

<0.1 EU/ µg protein, LAL method

Source:

HEK293-derived Human CTRL protein Cys19-Asn264 (Accession# P40313) with a rabbit IgG Fc tag at the C-terminus.

GeneID:

1506

Accession:

P40313

Predicted Molecular Mass:

52.4 kDa

SDS-PAGE:

52-65 kDa, reducing (R) conditions

Formulation:

Lyophilized from 0.22 µm filtered solution in PBS, pH 7.4. Normally 5% trehalose and 5% mannitol are added as protectants before lyophilization.

Biological Activity

Not tested

Storage and Shipping

Storage:

It is recommended that the protein be aliquoted for optimal storage. Avoid repeated freeze-thaw cycles.

- Until expiry date, -20°C to -80°C as lyophilized proteins.
- 3 months, -20°C to -80°C under sterile conditions after reconstitution.

Shipping:

The product is shipped at ambient temperature. Upon receipt, store it immediately at the recommended temperature.

Reconstitution

Briefly centrifuge the tube before opening. Reconstitute at 0.1-0.5 mg/mL in sterile water.

Background

CTRL (Chymotrypsin-like protease) is also named as CTRL1 and belongs to the peptidase S1 family. CTRL encode a protein of 264 amino acid and the protein has a signal peptide of 18 amino acid and a propeptide of 15 amino acid. The CTRL1 enzyme is active over a broad pH range. It expresses in pancreas and presence in intestinal fluid after stimulation of pancreatic secretion as a digestive enzyme. CTRL is a novel human exocrine pancreatic enzyme with substrate specificity similar to that of chymotrypsin. It contains the conserved sequences in the vicinity of the active site serine, aspartic acid, and histidine residues found in this family of serine proteases.

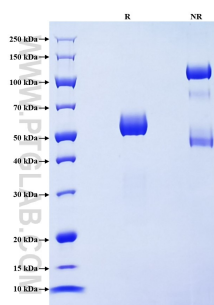
References

1. J E Reseland, et al. (1997) J Biol Chem. 272(12):8099-104.
2. S Brenner, et al. (1988) Nature. 334(6182):528-30.

Synonyms

chymotrypsin like, Chymotrypsin-like protease CTRL-1, CTRL1, EC:3.4.21.-

Selected Validation Data



Purity of Recombinant Human CTRL was determined by SDS-PAGE. The protein was resolved in an SDS-PAGE in reducing (R) and non-reducing (NR) conditions and stained using Coomassie blue.

For technical support and original validation data for this product please contact

T: 027-87531629

E: Proteintech-CN@ptglab.com

W: ptgcn.com

This product is exclusively available under Proteintech Group brand and is not available to purchase from any other manufacturer.