

# Recombinant Human KLRG1 protein (rFc Tag)

Catalog Number: Eg2036

## Basic Information

**Species:**  
Human

**Purity:**  
>90 %, SDS-PAGE

**Tag:**  
rFc Tag

## Technical Specifications

**Purity:**

>90 %, SDS-PAGE

**Endotoxin Level:**

<0.1 EU/ µg protein, LAL method

**Source:**

HEK293-derived Human KLRG1 protein Leu60-Phe195 (Accession# Q96E93-1) with a rabbit IgG Fc tag at the N-terminus.

**GeneID:**

10219

**Accession:**

Q96E93-1

**Predicted Molecular Mass:**

42.7 kDa

**SDS-PAGE:**

45-65 kDa, reducing (R) conditions

**Formulation:**

Lyophilized from 0.22 µm filtered solution in PBS, pH 7.4. Normally 5% trehalose and 5% mannitol are added as protectants before lyophilization.

## Biological Activity

Not tested

## Storage and Shipping

**Storage:**

It is recommended that the protein be aliquoted for optimal storage. Avoid repeated freeze-thaw cycles.

- Until expiry date, -20°C to -80°C as lyophilized proteins.
- 3 months, -20°C to -80°C under sterile conditions after reconstitution.

**Shipping:**

The product is shipped at ambient temperature. Upon receipt, store it immediately at the recommended temperature.

## Reconstitution

Briefly centrifuge the tube before opening. Reconstitute at 0.1-0.5 mg/mL in sterile water.

## Background

KLRG1 (killer cell lectin-like receptor subfamily G, member 1) is a C-type lectin inhibitory receptor that contains an immunoreceptor tyrosine-based inhibitory motif (ITIM) in its cytoplasmic domain. KLRG1 is expressed by subsets of NK and T cells, existing both as a monomer and as a disulfide-linked homodimer. It is considered to be a cell differentiation marker for NK and T cells and is strongly induced by viral and other infections. Through interactions with members of the cadherin family, KLRG1 plays an inhibitory role on NK- and T-cell function.

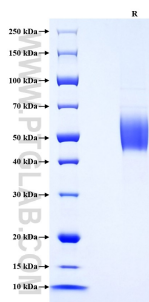
## References

1. L Corral, et al. (2000) Eur J Immunol. Mar;30(3):920-30.
2. Yili Li, et al. (2009) Immunity. Jul 17;31(1):35-46.
3. Stipan Jonjic. (2010) Eur J Immunol. May;40(5):1241-3.
4. Stephan Rosshart, et al. (2008) Eur J Immunol. Dec;38(12):3354-64.

## Synonyms

CLEC15A, C-type lectin domain family 15 member A, ITIM-containing receptor MAFA-L, Killer cell lectin-like receptor subfamily G member 1, MAFA

## Selected Validation Data



Purity of Recombinant Human KLRG1 was determined by SDS-PAGE. The protein was resolved in an SDS-PAGE in reducing (R) conditions and stained using Coomassie blue.

For technical support and original validation data for this product please contact

T: 027-87531629

E: [Proteintech-CN@ptglab.com](mailto:Proteintech-CN@ptglab.com)

W: [ptgcn.com](http://ptgcn.com)

This product is exclusively available under Proteintech Group brand and is not available to purchase from any other manufacturer.