

For Research Use Only

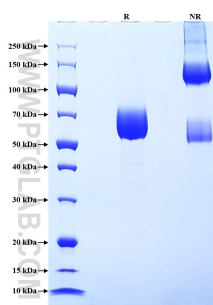
Recombinant Human Fc Epsilon RI Alpha protein (rFc Tag)



Catalog Number: Eg2022

Basic Information	Species: Human	Purity: >90 %, SDS-PAGE	Tag: rFc Tag
Technical Specifications	<p>Purity: >90 %, SDS-PAGE</p> <p>Endotoxin Level: <0.1 EU/ μg protein, LAL method</p> <p>Source: HEK293-derived Human Fc Epsilon RI Alpha protein Val26-Gln205 (Accession# P12319) with a rabbit IgG Fc tag at the C-terminus.</p> <p>GeneID: 2205</p> <p>Accession: P12319</p> <p>Predicted Molecular Mass: 47.3 kDa</p> <p>SDS-PAGE: 52-80 kDa, reducing (R) conditions</p> <p>Formulation: Lyophilized from 0.22 μm filtered solution in PBS, pH 7.4. Normally 5% trehalose and 5% mannitol are added as protectants before lyophilization.</p>		
Biological Activity	Not tested		
Storage and Shipping	<p>Storage: It is recommended that the protein be aliquoted for optimal storage. Avoid repeated freeze-thaw cycles.</p> <ul style="list-style-type: none">• Until expiry date, -20°C to -80°C as lyophilized proteins.• 3 months, -20°C to -80°C under sterile conditions after reconstitution. <p>Shipping: The product is shipped at ambient temperature. Upon receipt, store it immediately at the recommended temperature.</p>		
Reconstitution	Briefly centrifuge the tube before opening. Reconstitute at 0.1-0.5 mg/mL in sterile water.		
Background	<p>Fc fragment of IgE, high affinity I, receptor for, alpha polypeptide, also known as high affinity immunoglobulin epsilon receptor subunit alpha, FCER1A and FCE1A, is a single-pass type I membrane protein which contains 2 immunoglobulin-like domains. FCER1A is a subunit of the IgE receptor, which is composed of one glycosylated alpha (FCER1A), one beta (FCER1B), and two gamma (FCER1G) subunits. The high affinity IgE receptor plays a central role in allergic disease, coupling allergen and mast cells to initiate the inflammatory and immediate hypersensitivity responses that are characteristic of disorders such as hay fever and asthma.</p>		
References	<ol style="list-style-type: none">1. S S Saini, et al. (2001) J Allergy Clin Immunol. May; 107(5):832-41.2. Natalija Novak, et al. (2003) J Clin Invest. Apr; 111(7):1047-56.3. M C Seminario, et al. (1999) J Immunol. Jun 1; 162(11):6893-900.		
Synonyms	Fc epsilon RI alpha, FCE1A, Fc-epsilon RI-alpha, FcERI, FceRIa		

Selected Validation Data



Purity of Recombinant Human Fc Epsilon RI Alpha was determined by SDS-PAGE. The protein was resolved in an SDS-PAGE in reducing (R) and non-reducing (NR) conditions and stained using Coomassie blue.

For technical support and original validation data for this product please contact

T: 027-87531629

E: Proteintech-CN@ptglab.com

W: ptgcn.com

This product is exclusively available under Proteintech Group brand and is not available to purchase from any other manufacturer.