

For Research Use Only

# Recombinant Human BTLA protein (rFc Tag)



Catalog Number: Eg1919

## Basic Information

**Species:**  
Human

**Purity:**  
>90 %, SDS-PAGE

**Tag:**  
rFc Tag

## Technical Specifications

**Purity:**

>90 %, SDS-PAGE

**Endotoxin Level:**

<0.1 EU/  $\mu$ g protein, LAL method

**Source:**

HEK293-derived Human BTLA protein Lys31-Ser150 (Accession# Q7Z6A9-1) with a rabbit IgG Fc tag at the C-terminus.

**GeneID:**

151888

**Accession:**

Q7Z6A9-1

**Predicted Molecular Mass:**

40.0 kDa

**SDS-PAGE:**

47-60 kDa, reducing (R) conditions

**Formulation:**

Lyophilized from 0.22  $\mu$ m filtered solution in PBS, pH 7.4. Normally 5% trehalose and 5% mannitol are added as protectants before lyophilization.

## Biological Activity

Not tested

## Storage and Shipping

**Storage:**

It is recommended that the protein be aliquoted for optimal storage. Avoid repeated freeze-thaw cycles.

- Until expiry date, -20°C to -80°C as lyophilized proteins.
- 3 months, -20°C to -80°C under sterile conditions after reconstitution.

**Shipping:**

The product is shipped at ambient temperature. Upon receipt, store it immediately at the recommended temperature.

## Reconstitution

Briefly centrifuge the tube before opening. Reconstitute at 0.1-0.5 mg/mL in sterile water.

## Background

BTLA, or B and T lymphocyte attenuator, is a member of the CD28 superfamily and is a type I membrane glycoprotein identified as an inhibitory receptor. BTLA is extensively expressed in lymph nodes, thymus, and spleen, with little or no expression in organs such as the heart, kidney, brain, and liver. Among immune cells, BTLA is primarily expressed in B and T cells, with higher expression in B cells compared to T cells in the mouse spleen. BTLA plays a crucial role in regulating stimulatory and inhibitory signals in immune responses.

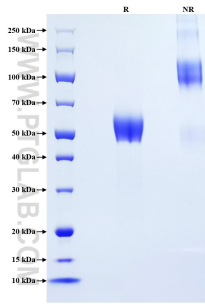
## References

1. Zhaochen N, et al. (2021) Front Immunol.12:654960
2. Christian S, et al. (2023) Cancer Immunol Immunother.72(7):2529-2539.

## Synonyms

BTLA, BTLA/CD272, B and T lymphocyte attenuator, B and T lymphocyte associated, B- and T-lymphocyte attenuator

## Selected Validation Data



Purity of Recombinant Human BTLA was determined by SDS-PAGE. The protein was resolved in an SDS-PAGE in reducing (R) and non-reducing (NR) conditions and stained using Coomassie blue.

For technical support and original validation data for this product please contact

T: 027-87531629

E: [Proteintech-CN@ptglab.com](mailto:Proteintech-CN@ptglab.com)

W: [ptgcn.com](http://ptgcn.com)

This product is exclusively available under Proteintech Group brand and is not available to purchase from any other manufacturer.