

For Research Use Only

Recombinant Human CD300C protein (rFc Tag)



Catalog Number: Eg1905

Basic Information

Species:
Human

Purity:
>90 %, SDS-PAGE

Tag:
rFc Tag

Technical Specifications

Purity:

>90 %, SDS-PAGE

Endotoxin Level:

<0.1 EU/ μ g protein, LAL method

Source:

HEK293-derived Human CD300C protein Gly21-Arg183 (Accession# Q08708) with a rabbit IgG Fc tag at the C-terminus.

GeneID:

10871

Accession:

Q08708

Predicted Molecular Mass:

44.1 kDa

SDS-PAGE:

50-70 kDa, reducing (R) conditions

Formulation:

Lyophilized from 0.22 μ m filtered solution in PBS, pH 7.4. Normally 5% trehalose and 5% mannitol are added as protectants before lyophilization.

Biological Activity

Not tested

Storage and Shipping

Storage:

It is recommended that the protein be aliquoted for optimal storage. Avoid repeated freeze-thaw cycles.

- Until expiry date, -20°C to -80°C as lyophilized proteins.
- 3 months, -20°C to -80°C under sterile conditions after reconstitution.

Shipping:

The product is shipped at ambient temperature. Upon receipt, store it immediately at the recommended temperature.

Reconstitution

Briefly centrifuge the tube before opening. Reconstitute at 0.1-0.5 mg/mL in sterile water.

Background

CD300c is a member of the CD300 family of receptors, which are type I transmembrane proteins expressed in both myeloid and lymphoid lineages and modulate immune responses by their stimulatory and inhibitory capabilities. CD300c, also known as CLM-6, CMRF-35 and IgSF16, is composed of an IgV-like extracellular domain, a transmembrane domain and a short cytoplasmic tail. It is expressed on the surface of monocytes, macrophages, dendritic cells, neutrophils, some T and B lymphocytes. CD300c has been reported as an activating receptor expressed on monocytes and that it has a potential role in inflammatory responses. It has also been identified as a T cell co-inhibitory molecule.

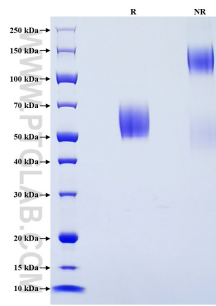
References

1. Vitallé J. et al. (2019). Eur J Immunol. 49(3):364-374.
2. Jackson DG. et al. (1992). Eur J Immunol. 22(5):1157-1163.
3. Cui C. et al. (2018). Front Immunol. 9:2657.
4. Simhadri VR. et al. (2013). J Innate Immun. 5(4):389-400.

Synonyms

CD300 antigen-like family member C, CD300c molecule, CLM 6, CMRF 35, CMRF 35A

Selected Validation Data



Purity of Recombinant Human CD300C was determined by SDS-PAGE. The protein was resolved in an SDS-PAGE in reducing (R) and non-reducing (NR) conditions and stained using Coomassie blue.

For technical support and original validation data for this product please contact

T: 027-87531629

E: Proteintech-CN@ptglab.com

W: ptgcn.com

This product is exclusively available under Proteintech Group brand and is not available to purchase from any other manufacturer.