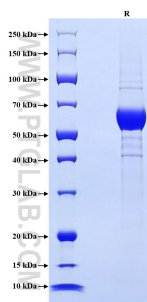


Recombinant Human KIR2DL4 protein (rFc Tag)

Catalog Number: Eg1895

Basic Information	Species: Human	Purity: >90 %, SDS-PAGE	Tag: rFc Tag
Technical Specifications	<p>Purity: >90 %, SDS-PAGE</p> <p>Endotoxin Level: <0.1 EU/ µg protein, LAL method</p> <p>Source: HEK293-derived Human KIR2DL4 protein His24-His242 (Accession# Q99706-1) with a rabbit IgG Fc tag at the C-terminus.</p> <p>GeneID: 3805</p> <p>Accession: Q99706-1</p> <p>Predicted Molecular Mass: 50.3 kDa</p> <p>SDS-PAGE: 52-68 kDa, reducing (R) conditions</p> <p>Formulation: Lyophilized from 0.22 µm filtered solution in PBS, pH 7.4. Normally 5% trehalose and 5% mannitol are added as protectants before lyophilization.</p>		
Biological Activity	Not tested		
Storage and Shipping	<p>Storage: It is recommended that the protein be aliquoted for optimal storage. Avoid repeated freeze-thaw cycles.</p> <ul style="list-style-type: none">• Until expiry date, -20°C to -80°C as lyophilized proteins.• 3 months, -20°C to -80°C under sterile conditions after reconstitution. <p>Shipping: The product is shipped at ambient temperature. Upon receipt, store it immediately at the recommended temperature.</p>		
Reconstitution	Briefly centrifuge the tube before opening. Reconstitute at 0.1-0.5 mg/mL in sterile water.		
Background	<p>Killer cell immunoglobulin-like receptors (KIRs) are transmembrane glycoproteins expressed by natural killer cells and subsets of T cells that regulate their responsiveness to signals received from their environment. Killer cell immunoglobulin-like receptor 2DL4 (KIR2DL4, also known as CD158D and KIR103AS) is an unusual member of the KIRs family, which activates the cytotoxicity of NK cells. KIR2DL4 has two immunoglobulin domains and a single immunoreceptor tyrosine-based inhibition motif (ITIM) in the cytoplasmic tail with weak inhibitory potential.</p>		
References	<ol style="list-style-type: none">1. Sumati Rajagopalan, Eric O Long. (2012). Front Immunol. Aug 20:3:258.2. Mathias Faure, Eric O Long. (2002). J Immunol. Jun 15;168(12):6208-14.3. Sumati Rajagopalan, et al. (2006). PLoS Biol. Jan;4(1):e9.4. Akiko Kikuchi-Maki, et al. (2003). J Immunol. Oct 1;171(7):3415-25.		
Synonyms	CD158 antigen-like family member D, CD158D, G9P, Killer cell immunoglobulin-like receptor 2DL4, KIR 103AS		

Selected Validation Data



Purity of Recombinant Human KIR2DL4 was determined by SDS-PAGE. The protein was resolved in an SDS-PAGE in reducing (R) conditions and stained using Coomassie blue.

For technical support and original validation data for this product please contact

T: 027-87531629

E: Proteintech-CN@ptglab.com

W: ptgcn.com

This product is exclusively available under Proteintech Group brand and is not available to purchase from any other manufacturer.