

For Research Use Only

Recombinant Human CLEC10A/CD301 protein (rFc Tag)



Catalog Number: Eg1892

Basic Information

Species:
Human

Purity:
>90 %, SDS-PAGE

Tag:
rFc Tag

Technical Specifications

Purity:

>90 %, SDS-PAGE

Endotoxin Level:

<0.1 EU/ μ g protein, LAL method

Source:

HEK293-derived Human CLEC10A protein Gln61-His316 (Accession# Q8IUN9-1) with a rabbit IgG Fc tag at the N-terminus.

GeneID:

10462

Accession:

Q8IUN9-1

Predicted Molecular Mass:

56.0 kDa

SDS-PAGE:

55-70 kDa, reducing (R) conditions

Formulation:

Lyophilized from 0.22 μ m filtered solution in PBS, pH 7.4. Normally 5% trehalose and 5% mannitol are added as protectants before lyophilization.

Biological Activity

Not tested

Storage and Shipping

Storage:

It is recommended that the protein be aliquoted for optimal storage. Avoid repeated freeze-thaw cycles.

- Until expiry date, -20°C to -80°C as lyophilized proteins.
- 3 months, -20°C to -80°C under sterile conditions after reconstitution.

Shipping:

The product is shipped at ambient temperature. Upon receipt, store it immediately at the recommended temperature.

Reconstitution

Briefly centrifuge the tube before opening. Reconstitute at 0.1-0.5 mg/mL in sterile water.

Background

C-type lectin domain family 10 member A (CLEC10A), also known as CD301, macrophage galactose-type C-type lectin (MGL), DC-asialoglyco protein receptor (DC-ASGP-R) or human macrophage lectin (HML), is a type II transmembrane glycoprotein having a calcium-dependent carbohydrate recognition domain. CLEC10A is expressed exclusively by myeloid professional antigen-presenting cells such as immature dendritic cells (DCs) and alternatively activated macrophages. CLEC10A is a marker for human CD1c⁺ DCs (cDC2). It functions as an endocytic receptor for glycosylated antigens.

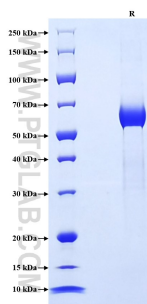
References

1. Suzuki N. et al. (1996). J Immunol. 156(1):128-135.
2. Higashi N. et al. (2002). J Biol Chem. 277(23):20686-20693.
3. Valladeau J. et al. (2001). J Immunol. 167(10):5767-5774.
4. van Vliet SJ. et al. (2006). Nat Immunol. 7(11):1200-1208.
5. Heger L. et al. (2018). Front Immunol. 9:744.

Synonyms

CLEC10A, CD301, CLECSF13, CLECSF14, C-type lectin domain family 10 member A

Selected Validation Data



Purity of Recombinant Human CLEC10A was determined by SDS-PAGE. The protein was resolved in an SDS-PAGE in reducing (R) conditions and stained using Coomassie blue.

For technical support and original validation data for this product please contact

T: 027-87531629

E: Proteintech-CN@ptglab.com

W: ptgcn.com

This product is exclusively available under Proteintech Group brand and is not available to purchase from any other manufacturer.